

Pentagon Security Camera Analysis

**Prepared for the May 30, 2018
9/11 Truth and Other Deep State Crimes Teleconference**

Wayne H. Coste, PE

Security Camera Debate

- The limited release of security cameras that captured the plane at the Pentagon has created controversy
 - Security camera recorded poor quality images
 - Two adjacent cameras
 - Recorded slightly different perspectives and time
 - Those differences have been asserted by some
 - To result from fraud
 - Not explainable by timing differences
 - Claimed to have looked at all frames and only one was 'different'

New Pearl Harbor Asserts in

- **Core assertion**

Given that the maximum fluctuation between the two cameras would translate in a difference of 25 feet in the position of the plane, can you provide a valid explanation for the large discrepancy between the two corresponding frames.*

*** Note: based on *New Pearl Harbor's* unsubstantiated assertion of maximum of 1/30^{ths} of a seconds between frames. Analysis shows that there are 4/30^{ths} of a second between frames (e.g. 4 x 25 feet = 100 feet travel distance).**

Security Camera Challenge from *New Pearl Harbor*

- *New Pearl Harbor's* core challenge:
Absent a valid explanation for this discrepancy, we must conclude that at least one of the two frames is the result of intentional manipulation, or "photo shopping."
- This analysis will address the New Pearl Harbor's challenge and substantiate the validity of the security camera videos

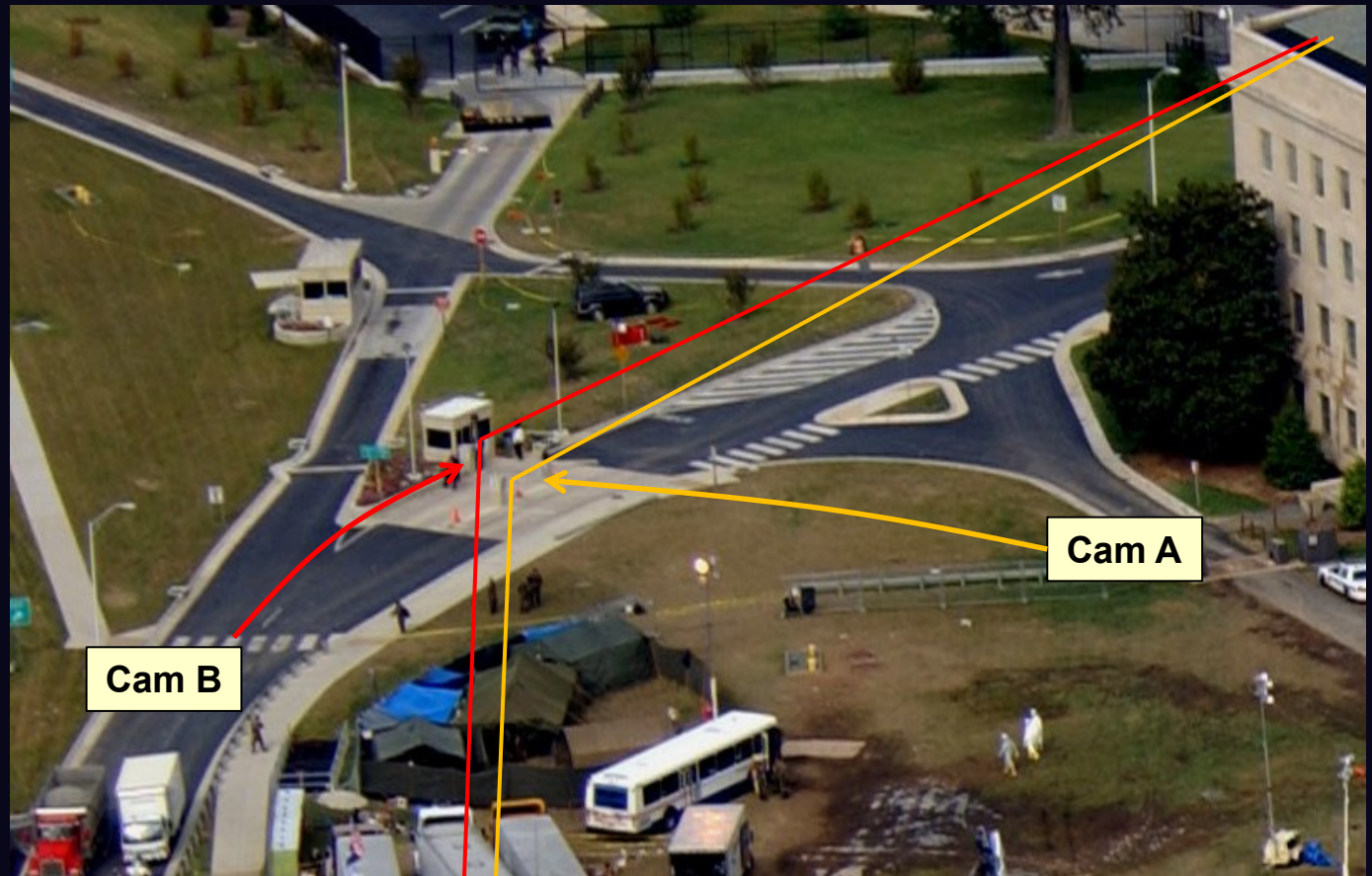
Security Camera Analysis

- *New Pearl Harbor's* analyses focuses on
 - The five frames from each camera at impact
 - Neglect other information in the videos
 - Mickey Bell's truck speeding away
 - Analysis of projectiles
- Movement of other objects shows
 - The two cameras do not record at same time
 - Difference in timing can be quantified
 - Can be used to estimate the speed of the plane

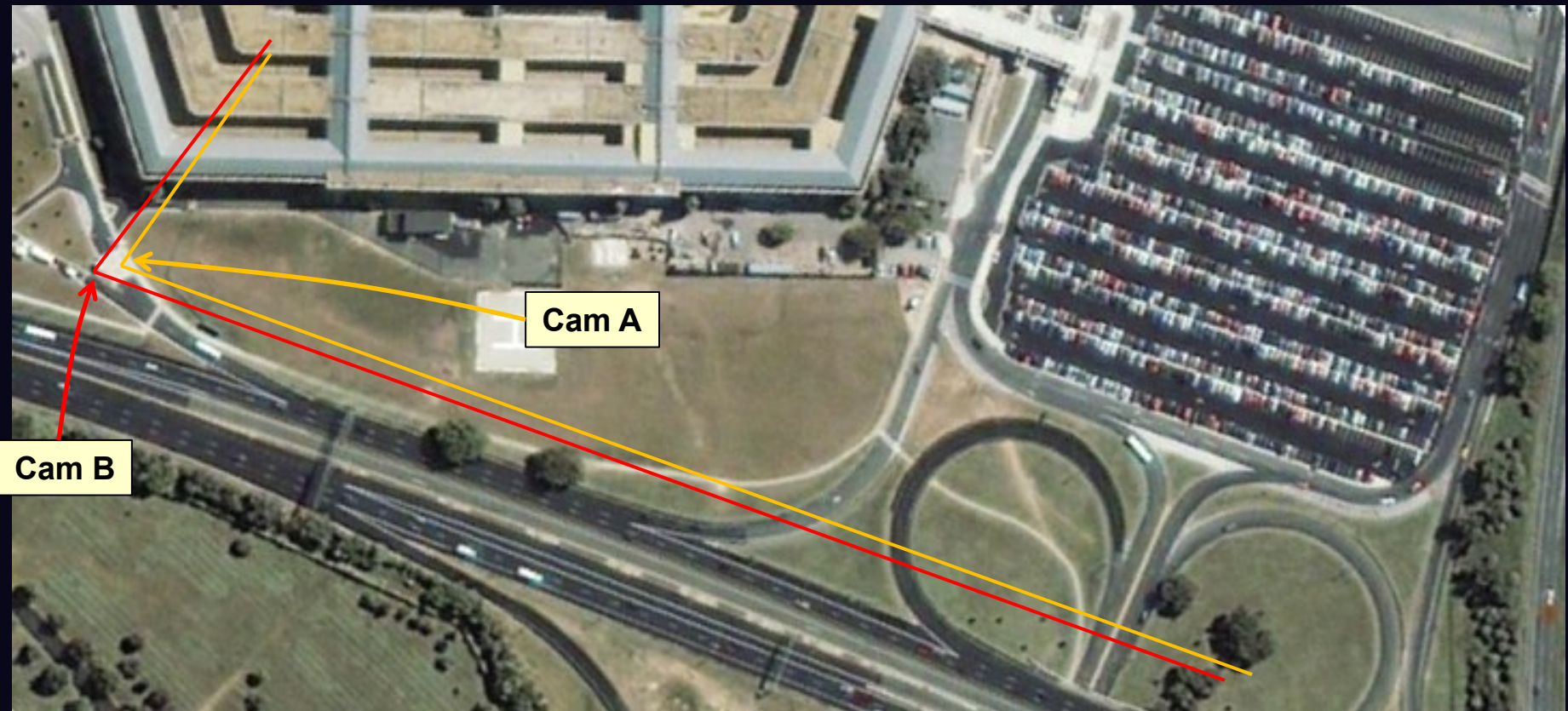
Security Camera Recordings

- Multiple versions of the security camera videos posted on YouTube (sometimes called Camera 1 and Camera 2)
- Camera A
<https://www.youtube.com/watch?v=vwzT0QnwtTE>
- Camera B
<https://www.youtube.com/watch?v=NgYPbUoe2iA>
- The times in the following frames will be in seconds of the respective video

Location of Cameras



Approximate Field of View



Pentagon Security Camera Analysis

CAMERA A

Pentagon Security Camera video from 9/11



▶ ⏮ 🔊 1:25 / 3:11

⚙️ 🔍

ScientistsFor911Truth.org

Pentagon Security Camera
Analysis

10

Pentagon Security Camera video from 9/11



▶ ▶| 🔊 1:26 / 3:11



ScientistsFor911Truth.org

Pentagon Security Camera
Analysis

11

Pentagon Security Camera video from 9/11



▶ ⏮ 🔊 1:27 / 3:11



ScientistsFor911Truth.org

Pentagon Security Camera
Analysis

12

Pentagon Security Camera video from 9/11



Note: Fireball not seen at ground level; as if it were dispersed by a trailing air mass.

▶ ▶| 🔊 1:28 / 3:11

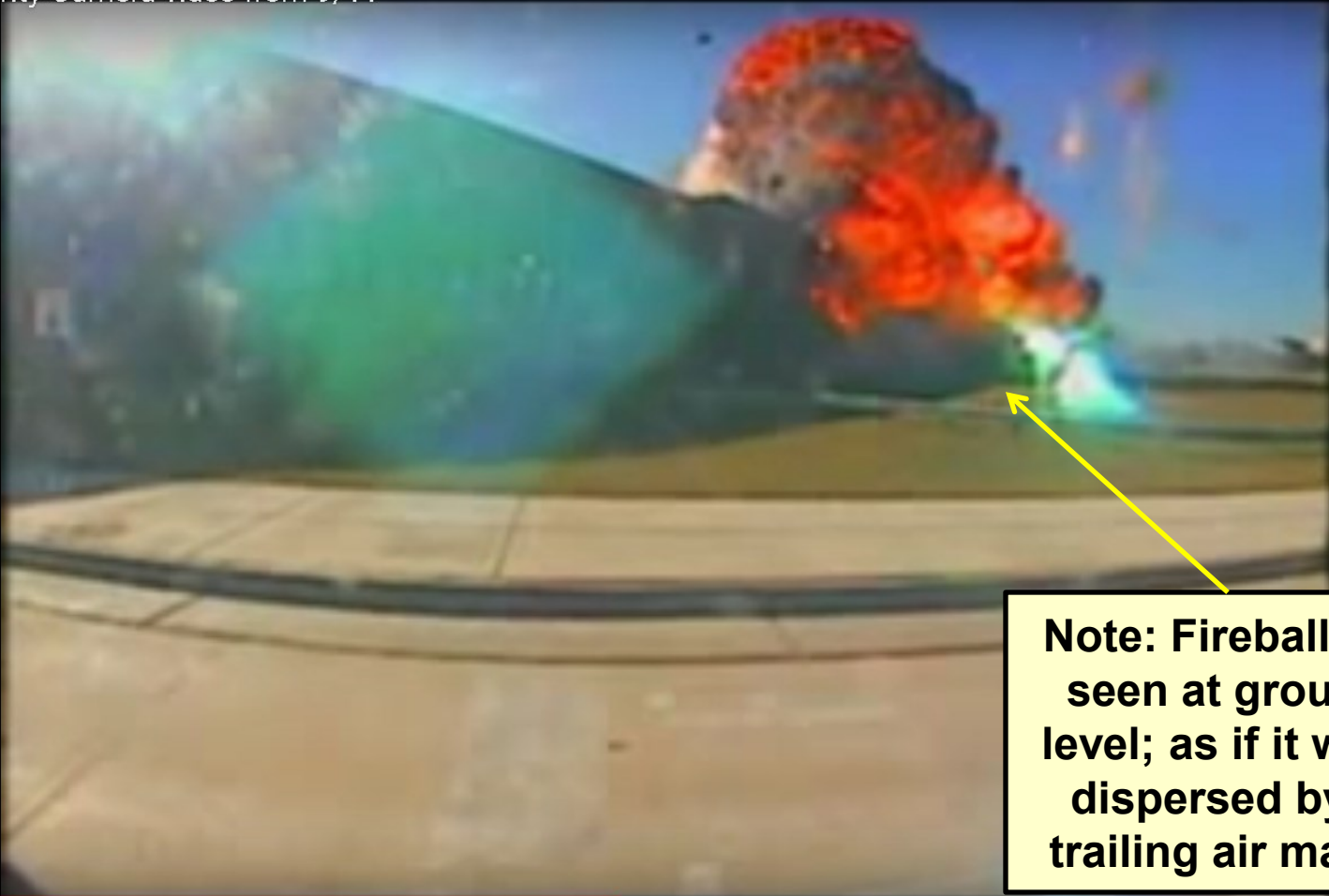
⚙️ 📏

ScientistsFor911Truth.org

Pentagon Security Camera
Analysis

13

Pentagon Security Camera video from 9/11



Note: Fireball not seen at ground level; as if it were dispersed by a trailing air mass.

▶ ▶| 🔊 1:29 / 3:11

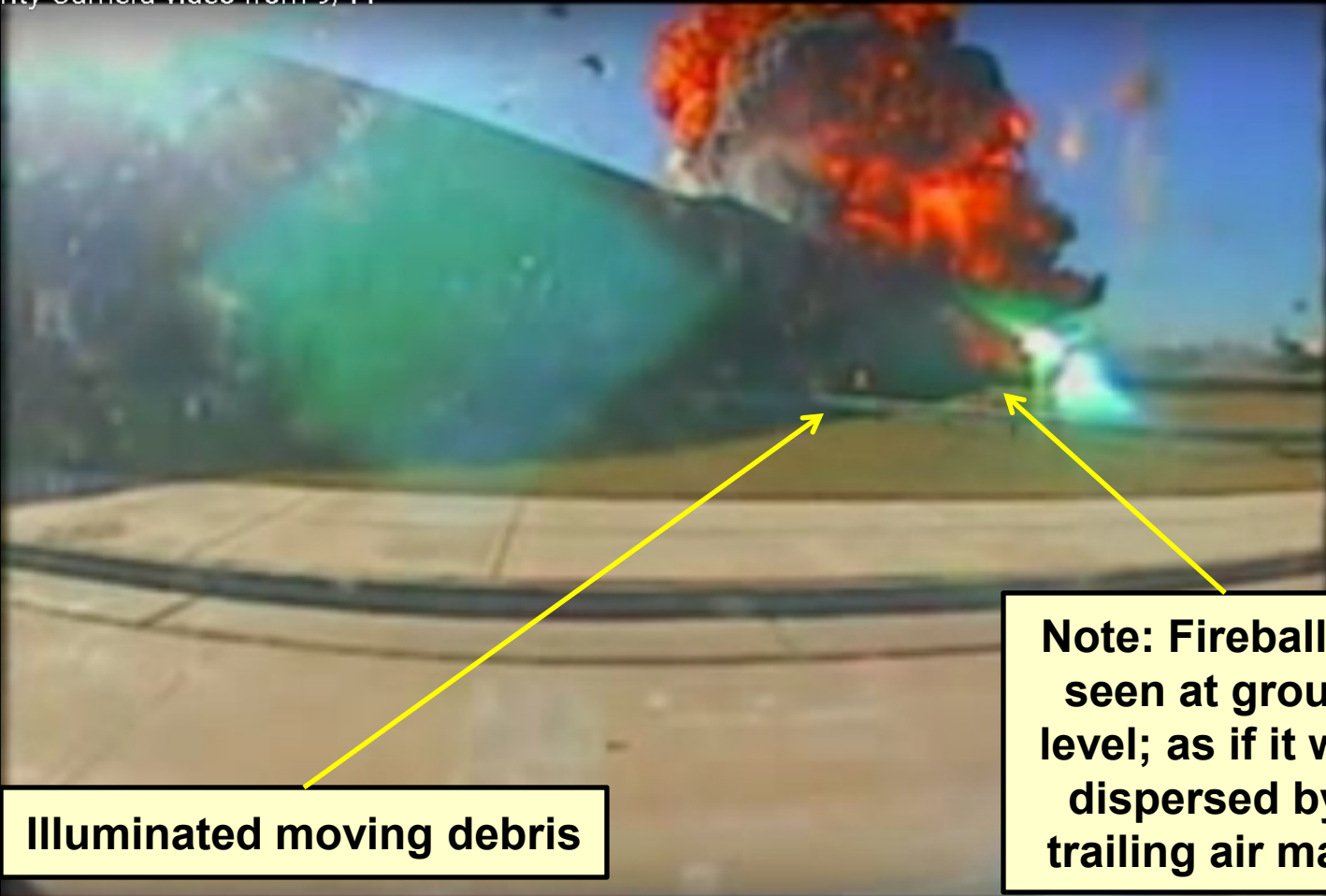
⚙️ 📏

ScientistsFor911Truth.org

Pentagon Security Camera
Analysis

14

Pentagon Security Camera video from 9/11



Illuminated moving debris

**Note: Fireball not
seen at ground
level; as if it were
dispersed by a
trailing air mass.**

▶ ▶| 🔊 1:30 / 3:11

⚙️ 📏

ScientistsFor911Truth.org

**Pentagon Security Camera
Analysis**

15

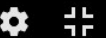
Pentagon Security Camera Analysis

CAMERA B

Pentagon Security Camera video from 9/11 (2)



▶ ▶| 🔊 0:12 / 3:22



ScientistsFor911Truth.org

**Pentagon Security Camera
Analysis**

17

Pentagon Security Camera video from 9/11 (2)



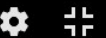
0:24 / 3:22



Pentagon Security Camera video from 9/11 (2)



▶ ▶| 🔊 0:25 / 3:22



ScientistsFor911Truth.org

Pentagon Security Camera
Analysis

19

Pentagon Security Camera video from 9/11 (2)



Note: Fireball not seen at ground level; as if it were dispersed by a trailing air mass.

0:26 / 3:22

ScientistsFor911Truth.org

Pentagon Security Camera
Analysis

20

Pentagon Security Camera video from 9/11 (2)



Note: Fireball not seen at ground level; as if it were dispersed by a trailing air mass.

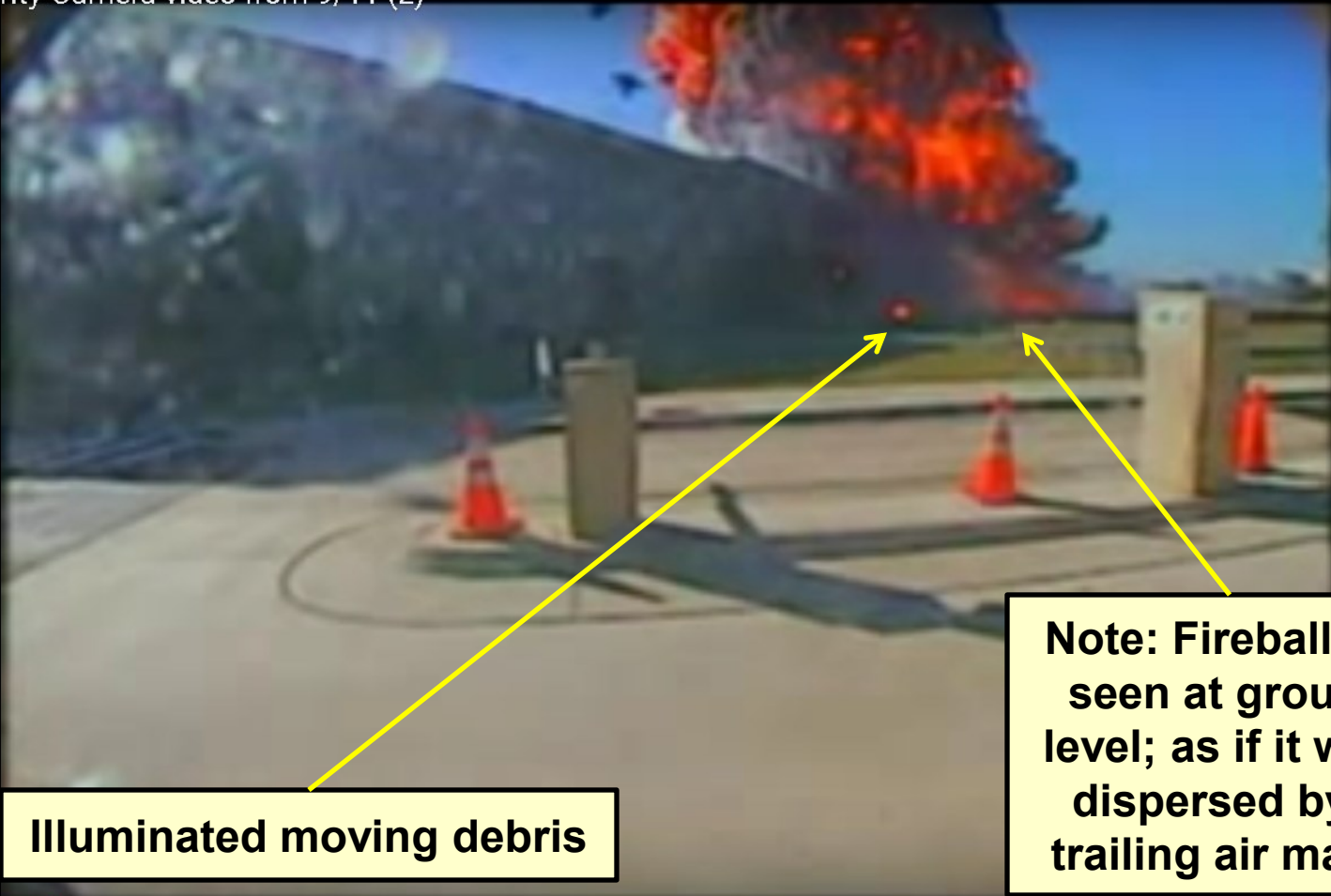
0:27 / 3:22

ScientistsFor911Truth.org

Pentagon Security Camera
Analysis

21

Pentagon Security Camera video from 9/11 (2)



Illuminated moving debris

**Note: Fireball not
seen at ground
level; as if it were
dispersed by a
trailing air mass.**

▶ ▶| 🔊 0:28 / 3:22

⚙️ 📏

ScientistsFor911Truth.org

Pentagon Security Camera
Analysis

22

Pentagon Security Camera Analysis

MICKEY BELL'S TRUCK

Did Not Look Carefully at All Frames

NPH Claimed to have looked carefully at all of the frames, but missed Mickey Bell's truck

13(410)	0	REF. EVENTI - FRONTI	0	REF. EVENTI - FRONTI	13(410)
14(448)	0	no eventi	0	no eventi	14(448)
15(480)	0	no eventi	0	no eventi	15(480)
16(512)	0	no eventi	0	no eventi	16(512)
17(544)	0	no eventi	0	no eventi	17(544)
18(576)	0	no eventi	0	no eventi	18(576)
19(608)	0	no eventi	0	no eventi	19(608)
20(640)	0	no eventi	0	no eventi	20(640)
21(672)	0	no eventi	0	no eventi	21(672)
22(704)	0	no eventi	0	no eventi	22(704)
23(736)	xxx	esplosione nera a profondità 17km *** data incognita ***	xxx	esplosione nera a profondità 17km *** data incognita ***	23(736)
24(768)	xxx	IMPATTO	xxx	IMPATTO - FLASH BIANCO	24(768)
25(800)	xxx	ESPLOSIONE	xxx	ESPLOSIONE	25(800)
26(832)	xxx	ESPLOSIONE	xxx	ESPLOSIONE	26(832)
27(864)	xxx	ESPLOSIONE - fumo	xxx	ESPLOSIONE - fumo	27(864)
28(896)	xxx	ESPLOSIONE - fumo	xxx	ESPLOSIONE - fumo	28(896)
29(928)	xxx	ESPLOSIONE - fumo	xxx	ESPLOSIONE - fumo	29(928)
30(960)	xxx	propagazione fumo nero	xxx	propagazione fumo nero	30(960)
31(992)	xxx	propagazione fumo nero	xxx	propagazione fumo nero	31(992)
32(1024)	xxx	FRAME SOVRAESPOSTO (?)	xxx	propagazione fumo nero	32(1024)
33(1056)	xx	probabile detrito dx quadro	xx	probabile detrito dx quadro	33(1056)
34(1088)	x	propagazione fumo nero	x	propagazione fumo nero	34(1088)
35(1120)	x	propagazione fumo nero	x	propagazione fumo nero	35(1120)
36(1152)	x	propagazione fumo nero	x	propagazione fumo nero	36(1152)
37(1184)	x	propagazione fumo nero	x	propagazione fumo nero	37(1184)

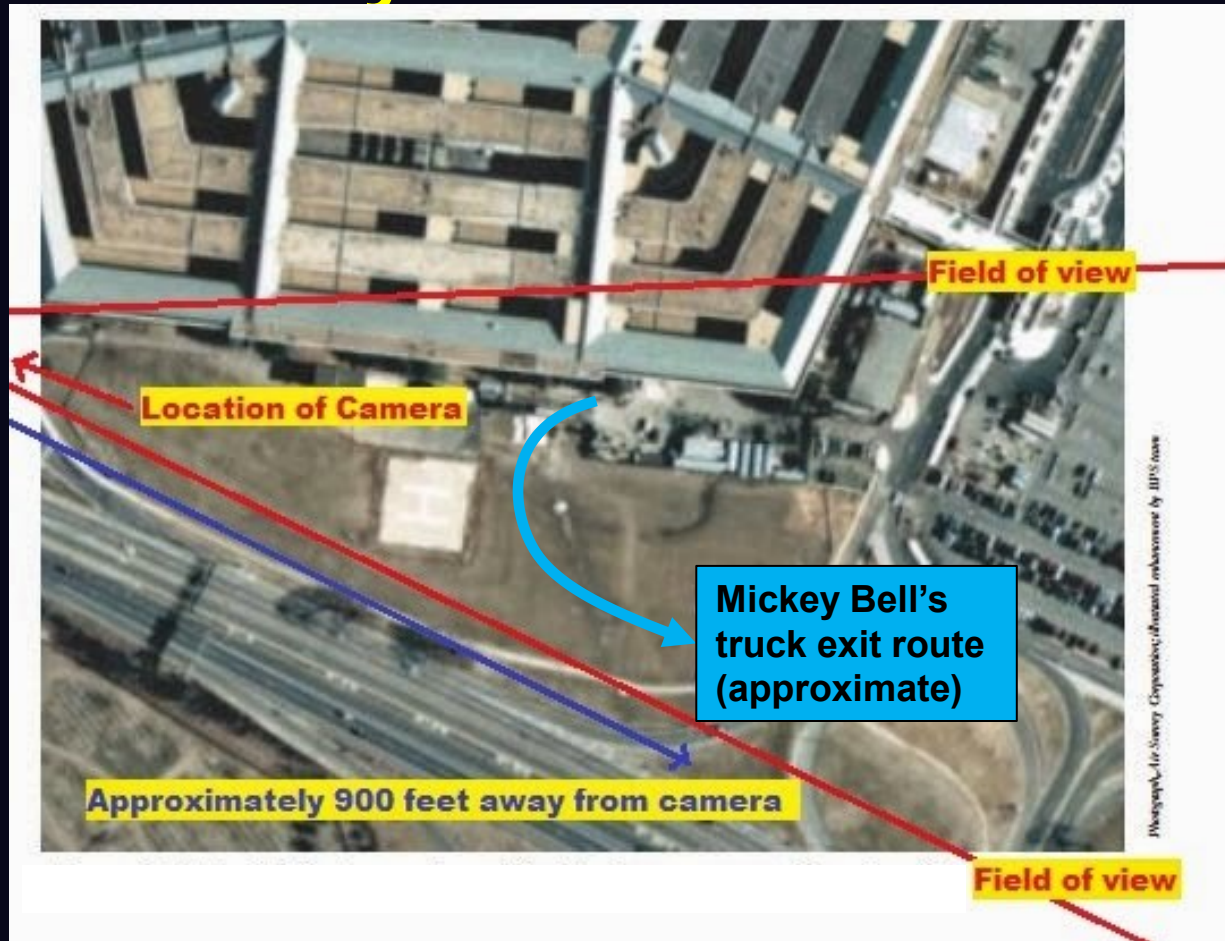
Truck Driven By Mickey Bell Sped Away

Mickey Bell:

Bell, who had been less than 100 feet from the initial impact of the plane, was nearly struck by one of the plane's wings as it sped by him. In shock, he got into his truck, which had been parked in the trailer compound, and sped away. He wandered around Arlington in his truck and tried to make wireless phone calls. He ended up back at Singleton's headquarters in Gaithersburg two hours later, according to President Singleton, not remembering much. The full impact of the closeness of the crash wasn't realized until coworkers noticed damage to Bell's work vehicle. He had plastic and rivets from an airplane imbedded in its sheet metal, but Bell had no idea what had happened.

Source: http://www.whatreallyhappened.com/WRHARTICLES/911_pentagon_eyewitnesses.html , and https://web.archive.org/web/20020407032533/http://www.necanet.org/whats_new/report.cfm?ID=1003

Security Camera: Field of View and Mickey Bell's Truck Route



Camera A: Before Impact – No truck visible

Pentagon Security Camera video from 9/11



▶ ▶| 🔊 1:26 / 3:11

⚙️ 🔍

ScientistsFor911Truth.org

Pentagon Security Camera
Analysis

27

Camera A: Mickey Bell's Truck Image 1

Pentagon Security Camera video from 9/11



▶ ▶| 🔊 2:38 / 3:11

⚙️ 🔍

ScientistsFor911Truth.org

Pentagon Security Camera
Analysis

28

Camera A: Mickey Bell's Truck Image 2

Pentagon Security Camera video from 9/11



▶ ▶| 🔊 2:39 / 3:11



ScientistsFor911Truth.org

Pentagon Security Camera
Analysis

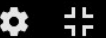
29

Camera A: Mickey Bell's Truck Image 3

Pentagon Security Camera video from 9/11



▶ ▶| 🔊 2:41 / 3:11



ScientistsFor911Truth.org

Pentagon Security Camera
Analysis

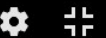
30

Camera A: Mickey Bell's Truck Image 4

Pentagon Security Camera video from 9/11



▶ ▶| 🔊 2:42 / 3:11



ScientistsFor911Truth.org

Pentagon Security Camera
Analysis

31

Camera B: Before Impact – No truck visible

Pentagon Security Camera video from 9/11 (2)



ScientistsFor911Truth.org

Pentagon Security Camera
Analysis

32

Camera B: Mickey Bell's Truck Image 1

Pentagon Security Camera video from 9/11 (2)



▶ ⏮ 🔊 1:37 / 3:22

⚙️ 🔍

ScientistsFor911Truth.org

Pentagon Security Camera
Analysis

33

Camera B: Mickey Bell's Truck Image 2

Pentagon Security Camera video from 9/11 (2)



▶ ▶| 🔊 1:38 / 3:22

⚙️ 🔍

ScientistsFor911Truth.org

Pentagon Security Camera
Analysis

34

Camera B: Mickey Bell's Truck Image 3

Pentagon Security Camera video from 9/11 (2)



▶ ▶| 🔊 1:39 / 3:22

⚙️ 🔍

ScientistsFor911Truth.org

Pentagon Security Camera
Analysis

35

Camera B: Mickey Bell's Truck Image 4

Pentagon Security Camera video from 9/11 (2)



▶ ▶| 🔊 1:40 / 3:22

⚙️ 🔍

ScientistsFor911Truth.org

Pentagon Security Camera
Analysis

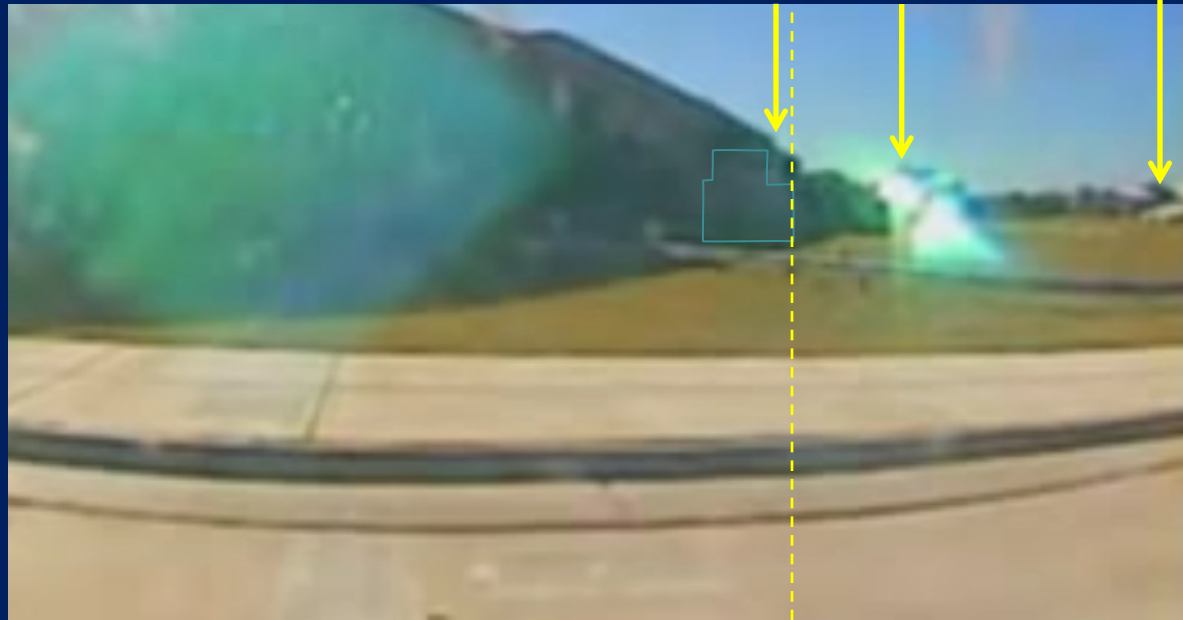
36

Flip Comparator

- Flipping between following two slides:
 - Allows comparison of the movement of an object between the two cameras
 - Difference in movement can be quantified
- Observation:
 - Horizontal motion suggests timing difference between cameras
 - Because of photographic perspective, care must be taken to visually align / register images

Alignment of Camera A

Horizontal alignment registered using dotted at line fire tower wall

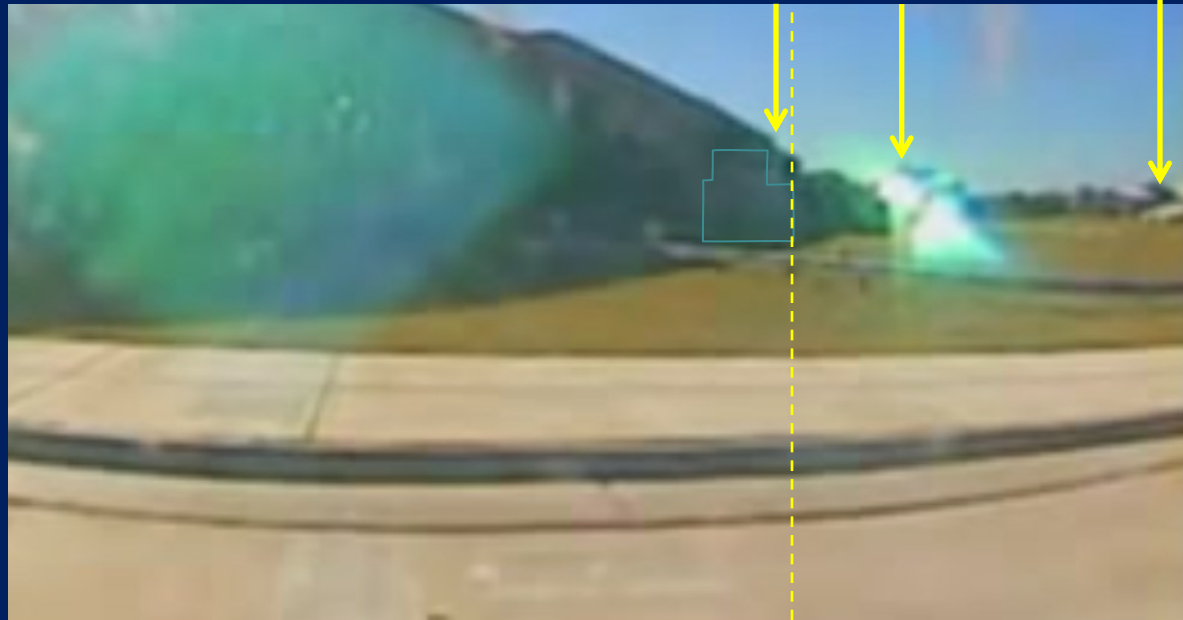


Alignment of Camera B

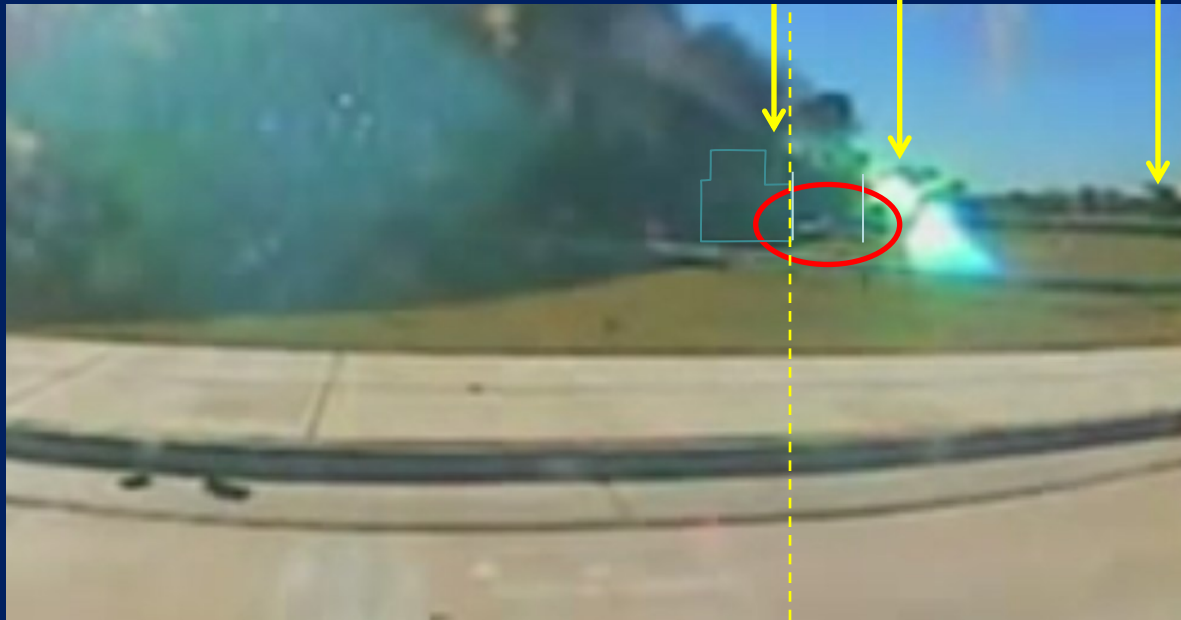
Camera B aligned at the firehouse



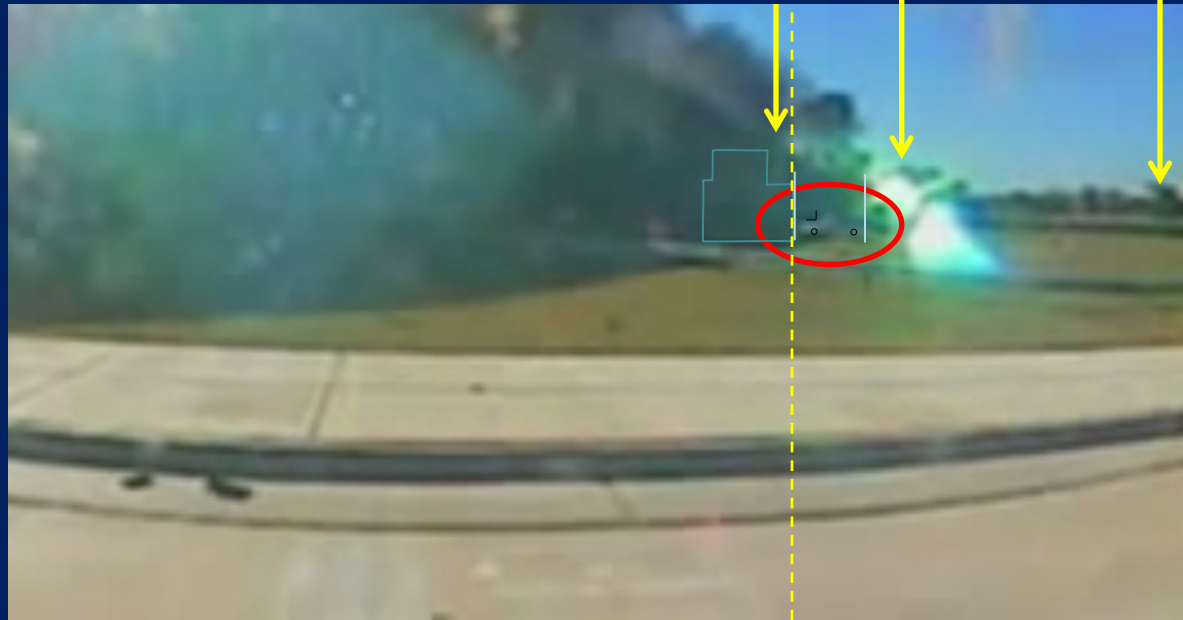
Alignment of Camera A Before Impact



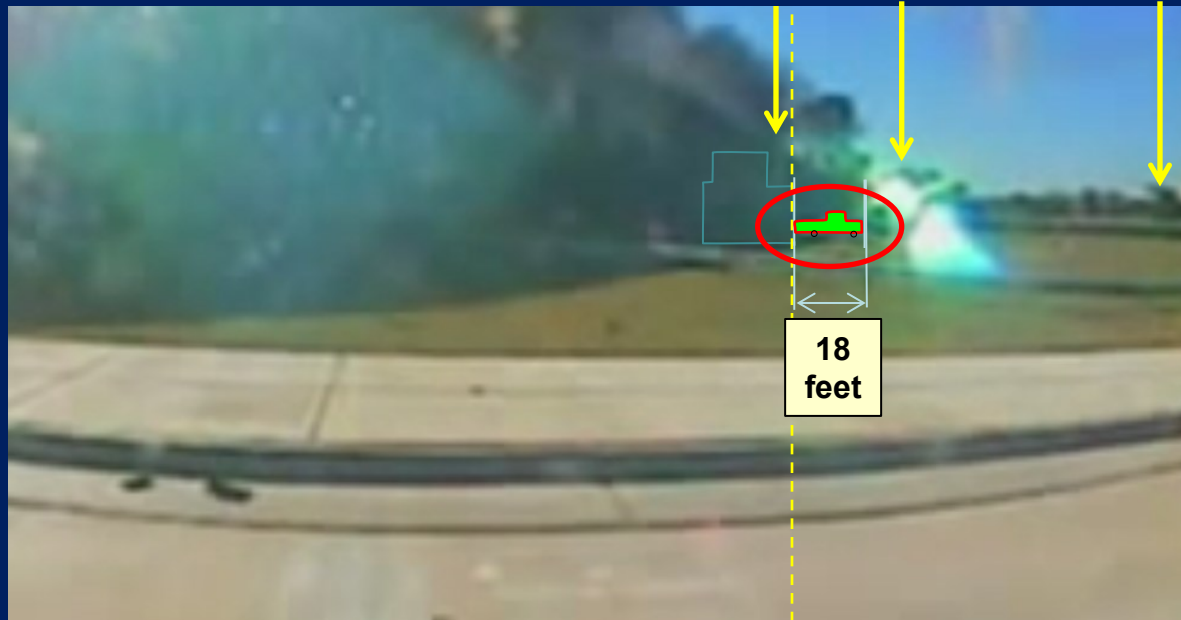
Camera A: Mickey Bell's truck is visible



Camera A: Mickey Bell's truck is visible with wheels highlighted



Camera A: Mickey Bell's truck is visible and outlined

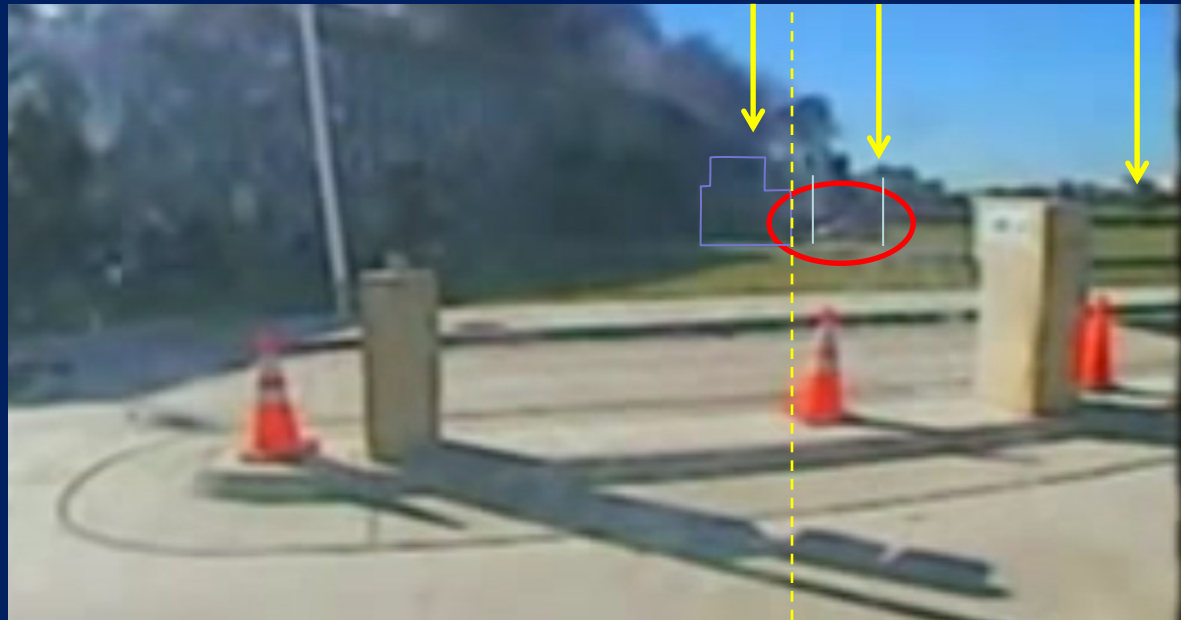


Camera A: Truck moves forward 2 ¼ lengths in 1 second (~28 mph)

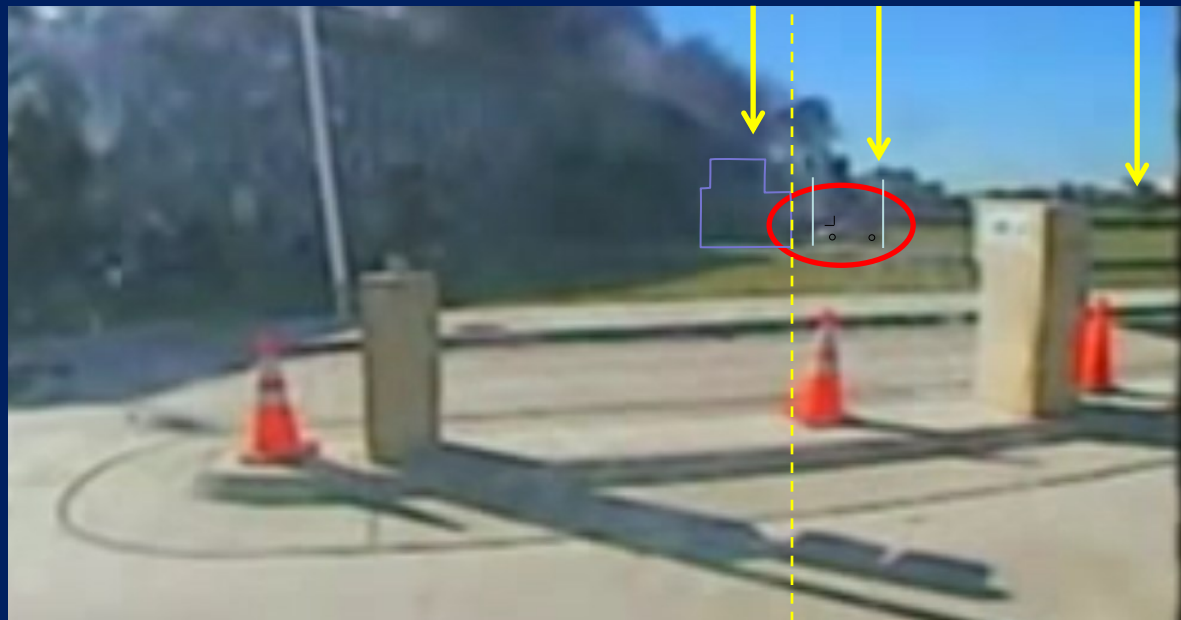


Note: Travels 41feet in 1 second

Camera B: Rear of Mickey Bell's truck visible



Camera B: Mickey Bell's truck is visible with wheels highlighted



Note: With Camera B located to the left of Camera A, Camera B would show the truck to have moved less than if it were at the Camera A location.

▶ ▶| 🔊 1:37 / 3:22

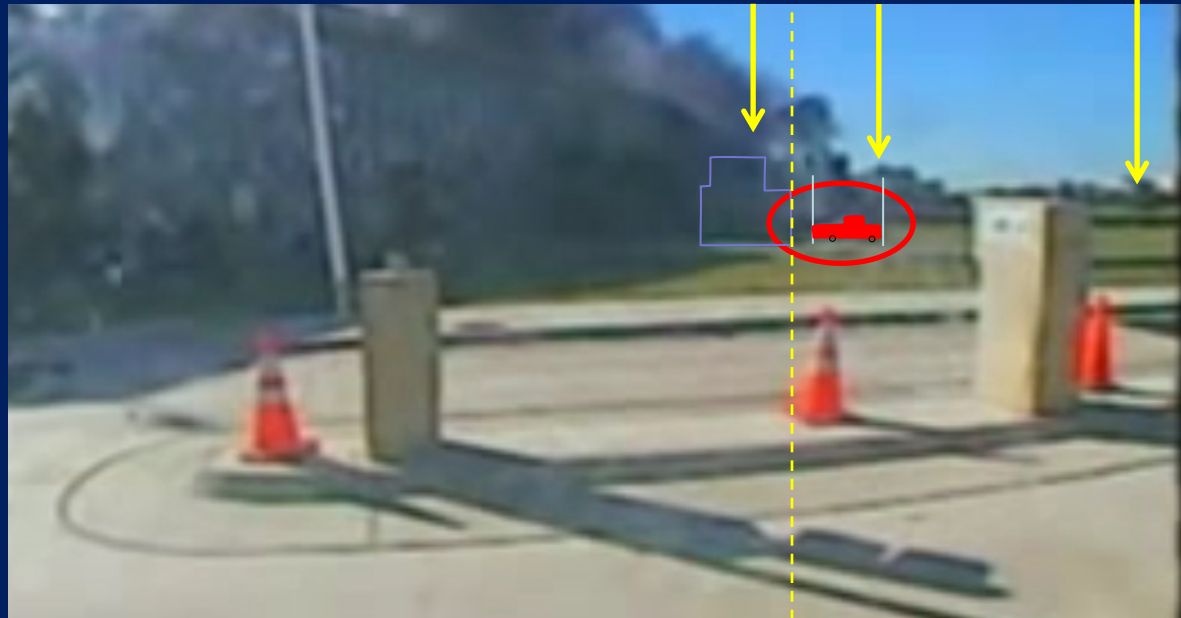
⚙️ 📺

ScientistsFor911Truth.org

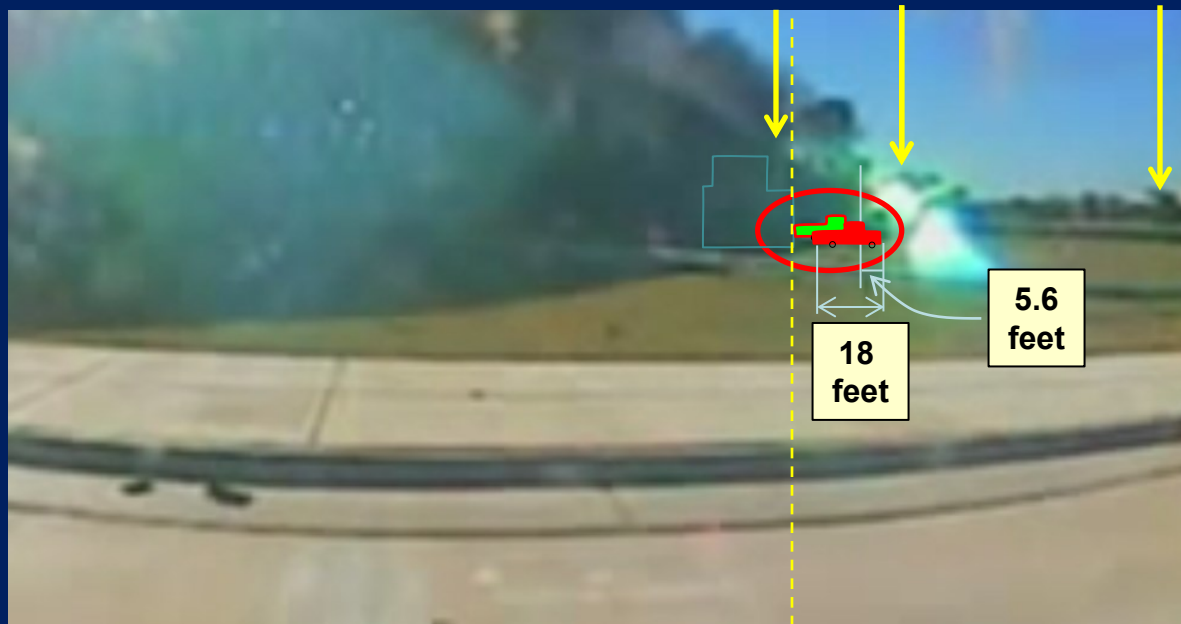
Pentagon Security Camera
Analysis

46

Camera B: Mickey Bell's truck visible and outlined



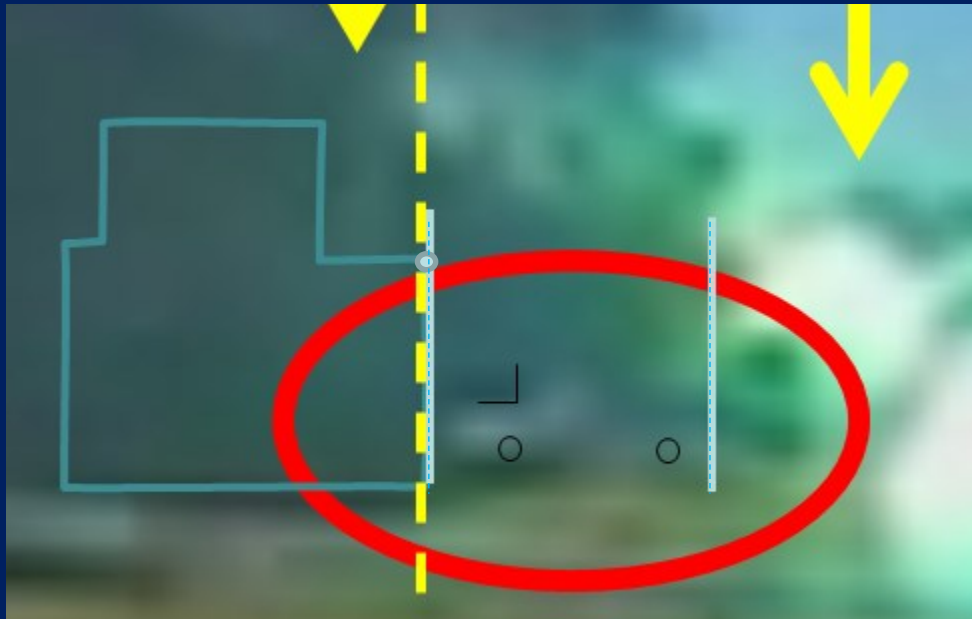
Compare A vs B: Mickey Bell's truck is seen to move approximately 5.6 feet



Note: truck moves 5.6 feet
between images recorded by camera A and B
 $5.6 \text{ feet} / 41 \text{ feet/sec} = 0.136 \text{ sec}$

Close up of Mickey Bell's Truck

Camera A: Mickey Bell's truck visible near dotted line (outlined)



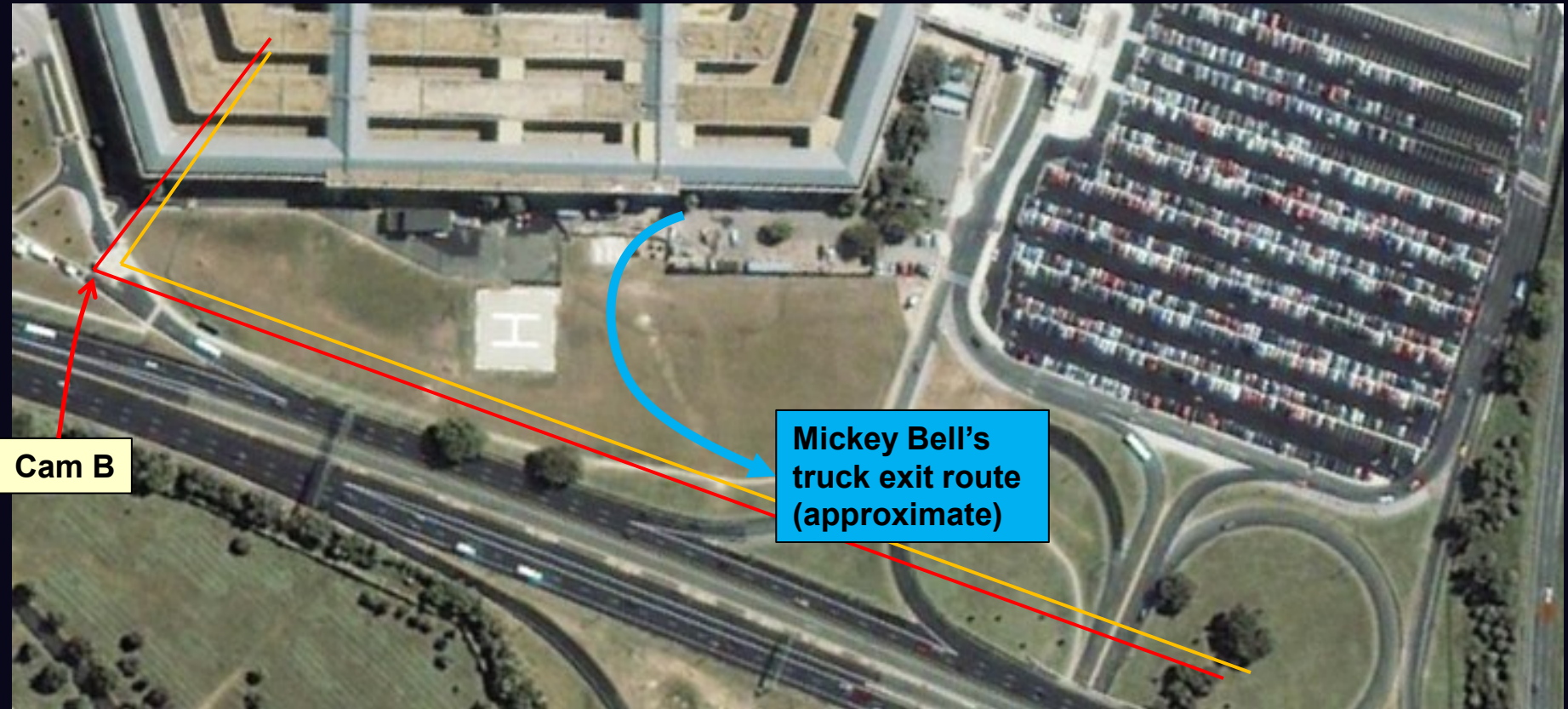
Movement of Approximately 1/3 Truck Length is Clear

Camera B: Mickey Bell's truck visible away from dotted line (outlined)



Note: Key calculation is that – between camera A and B – the truck is seen moving 13.6 percent of the distance that the truck moves in one second.
 $0.136 = (5.6 \text{ feet}) / (41.0 \text{ feet / sec})$

No Perspective Difference Between these Two Cameras



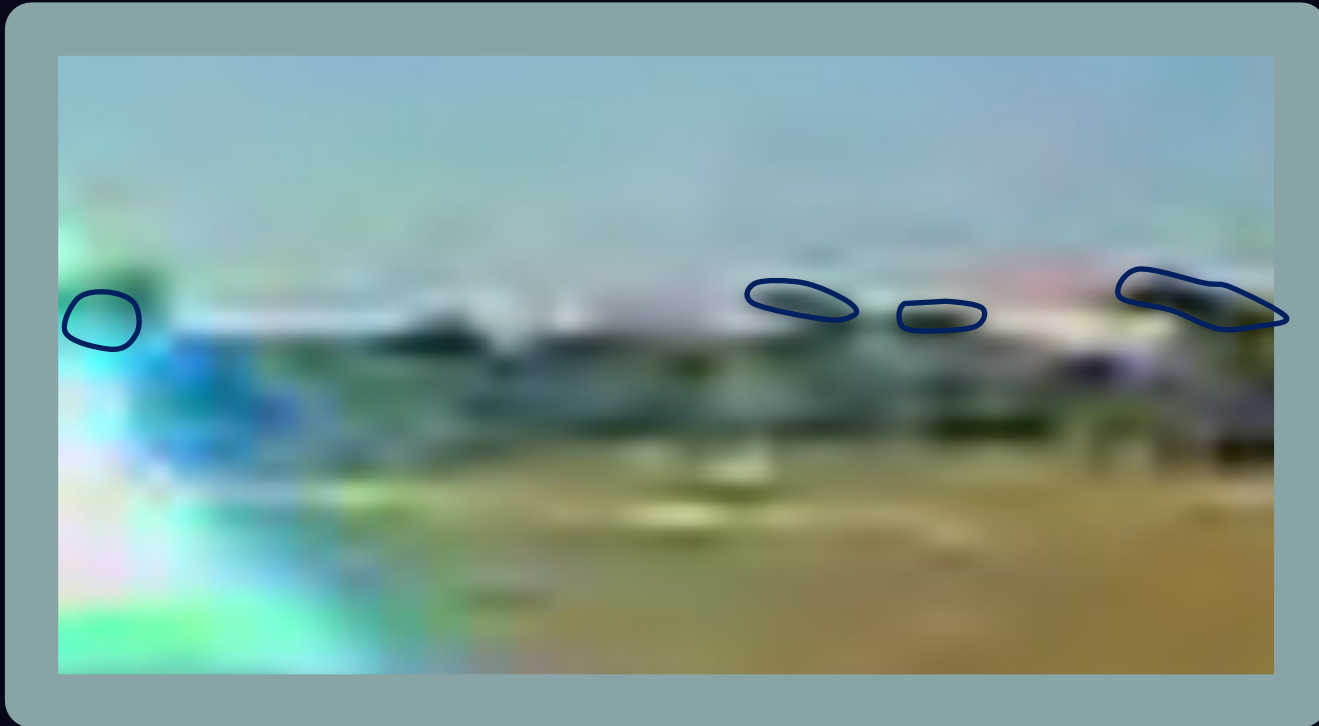
Observation

- Images of Mickey Bell's truck show a small movement between cameras A and B
 - About 5.6 feet difference
 - At observed speed of 41 feet/sec (28 mph)
 - Traveling 5.6 feet takes 0.136 seconds
 - Observations well within measurement error
 - Validates 4/30th between cameras (0.133 sec)
- *New Pearl Harbor's* analysis is flawed and Mazzucco's analysis must be corrected

Pentagon Security Camera Analysis

PLANE IMAGE ANALYSIS

Camera A Image Registration



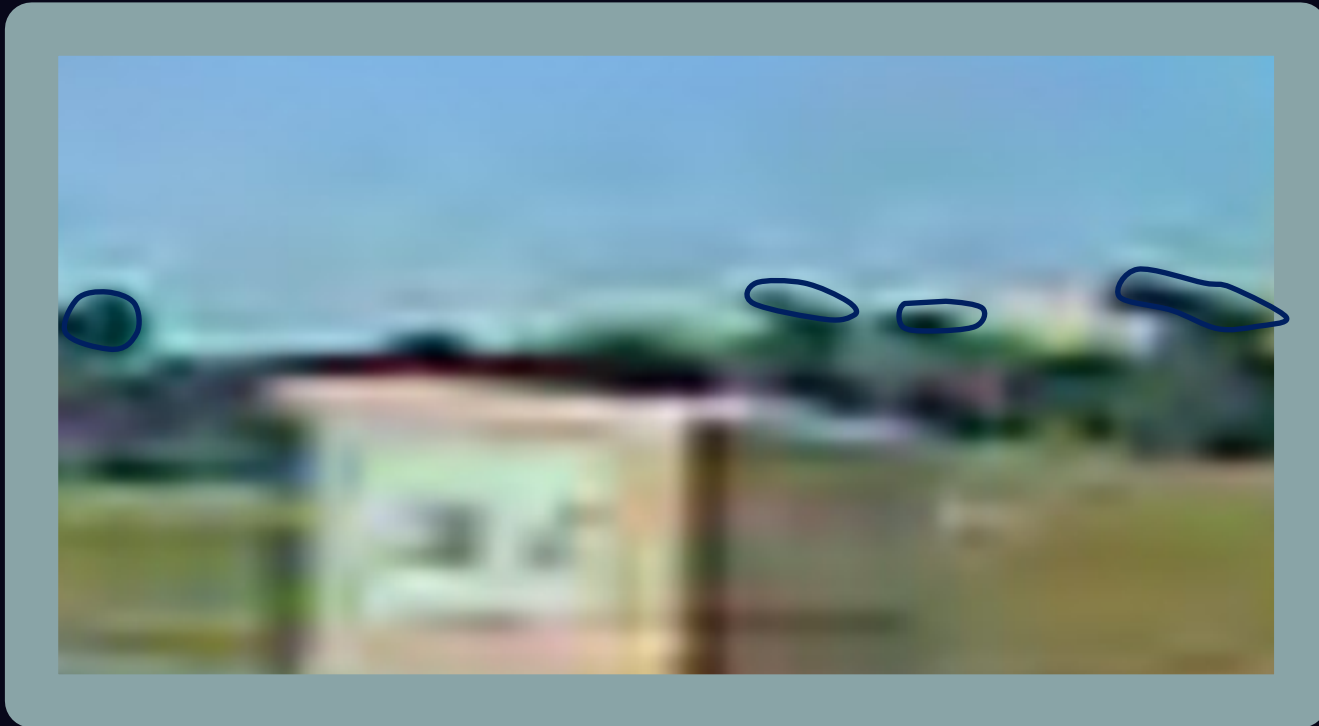
Source: <http://911speakout.org/wp-content/uploads/BlinkedPentagonPlane.html>

ScientistsFor911Truth.org

Pentagon Security Camera
Analysis

54

Camera B Image Registration



Source: <http://911speakout.org/wp-content/uploads/BlinkedPentagonPlane.html>

ScientistsFor911Truth.org

Pentagon Security Camera
Analysis

55

Camera A without Plane



Source: <http://911speakout.org/wp-content/uploads/BlinkedPentagonPlane.html>

ScientistsFor911Truth.org

Pentagon Security Camera
Analysis

56

Camera A with Plane



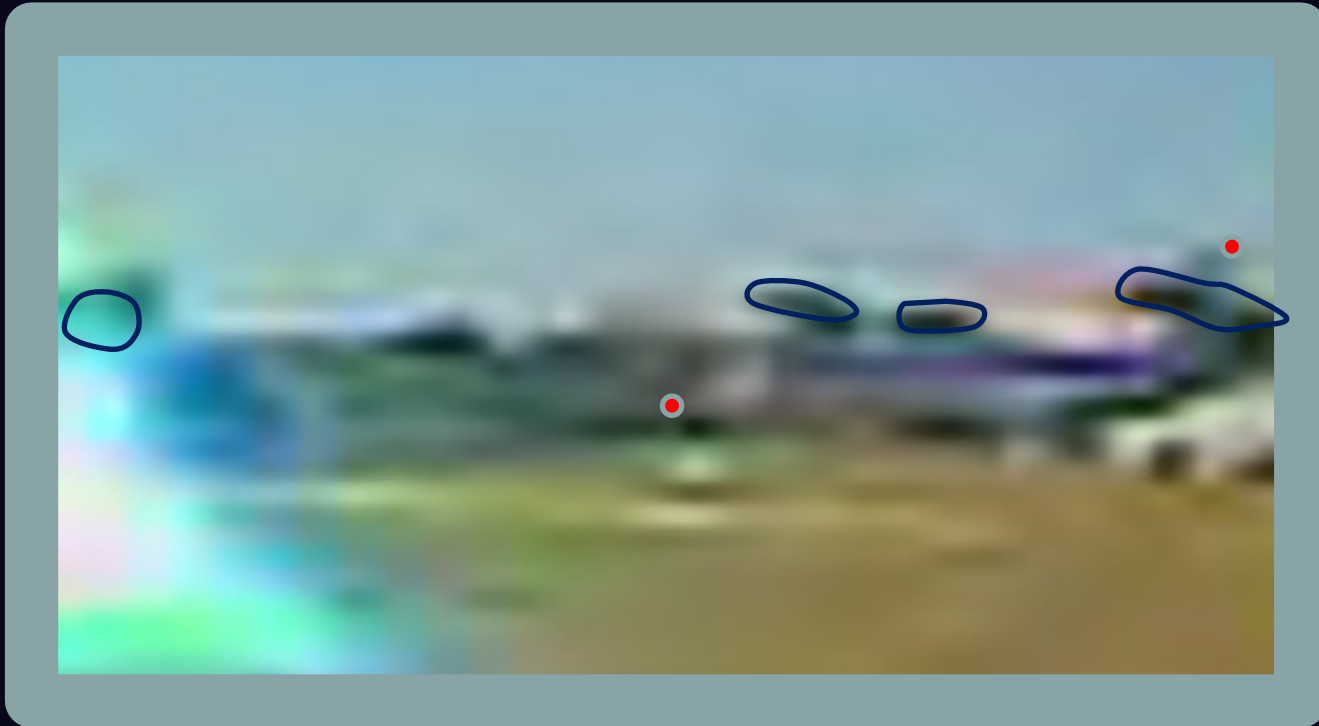
Source: <http://911speakout.org/wp-content/uploads/BlinkedPentagonPlane.html>

ScientistsFor911Truth.org

Pentagon Security Camera
Analysis

57

Camera A with Plane and Markers



Source: <http://911speakout.org/wp-content/uploads/BlinkedPentagonPlane.html>

ScientistsFor911Truth.org

Pentagon Security Camera
Analysis

58

Camera A With Plane Outline



Source: <http://911speakout.org/wp-content/uploads/BlinkedPentagonPlane.html>

ScientistsFor911Truth.org

Pentagon Security Camera
Analysis

59

Camera B without Plane



Source: <http://911speakout.org/wp-content/uploads/BlinkedPentagonPlane.html>

ScientistsFor911Truth.org

Pentagon Security Camera
Analysis

60

Camera B With Plane



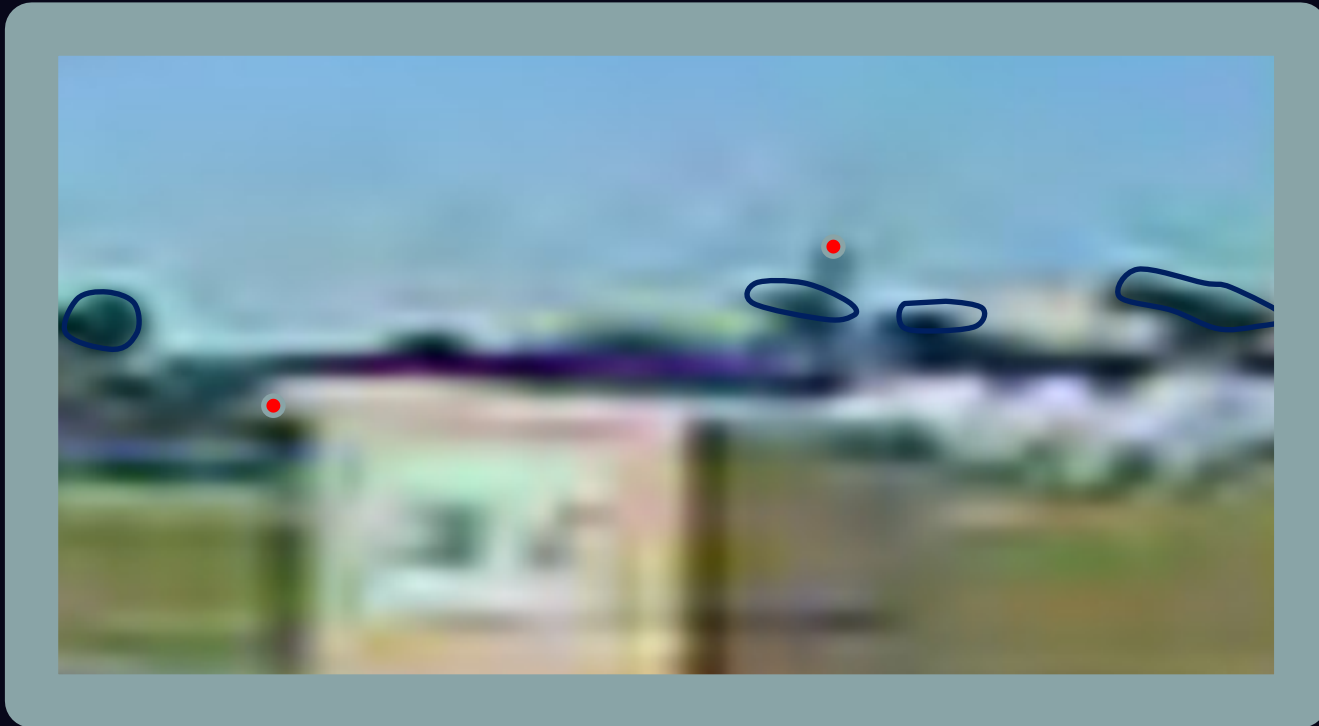
Source: <http://911speakout.org/wp-content/uploads/BlinkedPentagonPlane.html>

ScientistsFor911Truth.org

Pentagon Security Camera
Analysis

61

Camera B With Plane and Markers



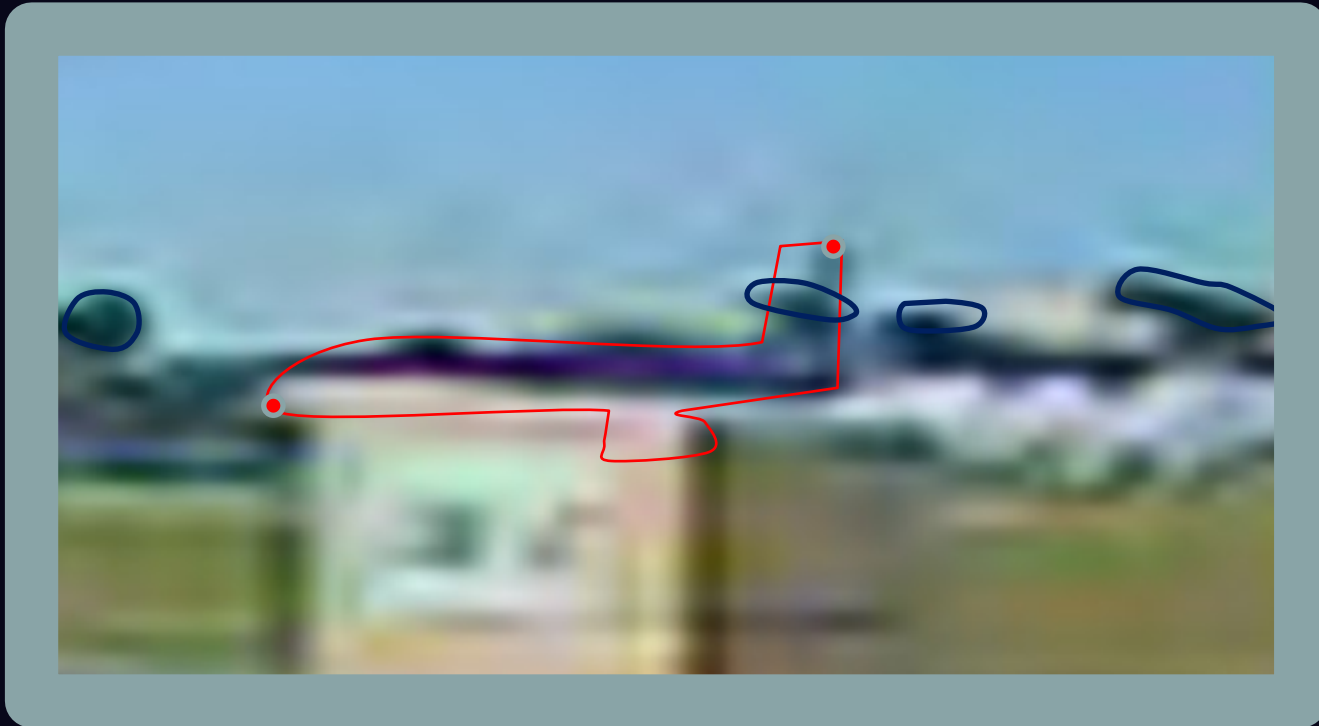
Source: <http://911speakout.org/wp-content/uploads/BlinkedPentagonPlane.html>

ScientistsFor911Truth.org

Pentagon Security Camera
Analysis

62

Camera B With Plane Outline



Source: <http://911speakout.org/wp-content/uploads/BlinkedPentagonPlane.html>

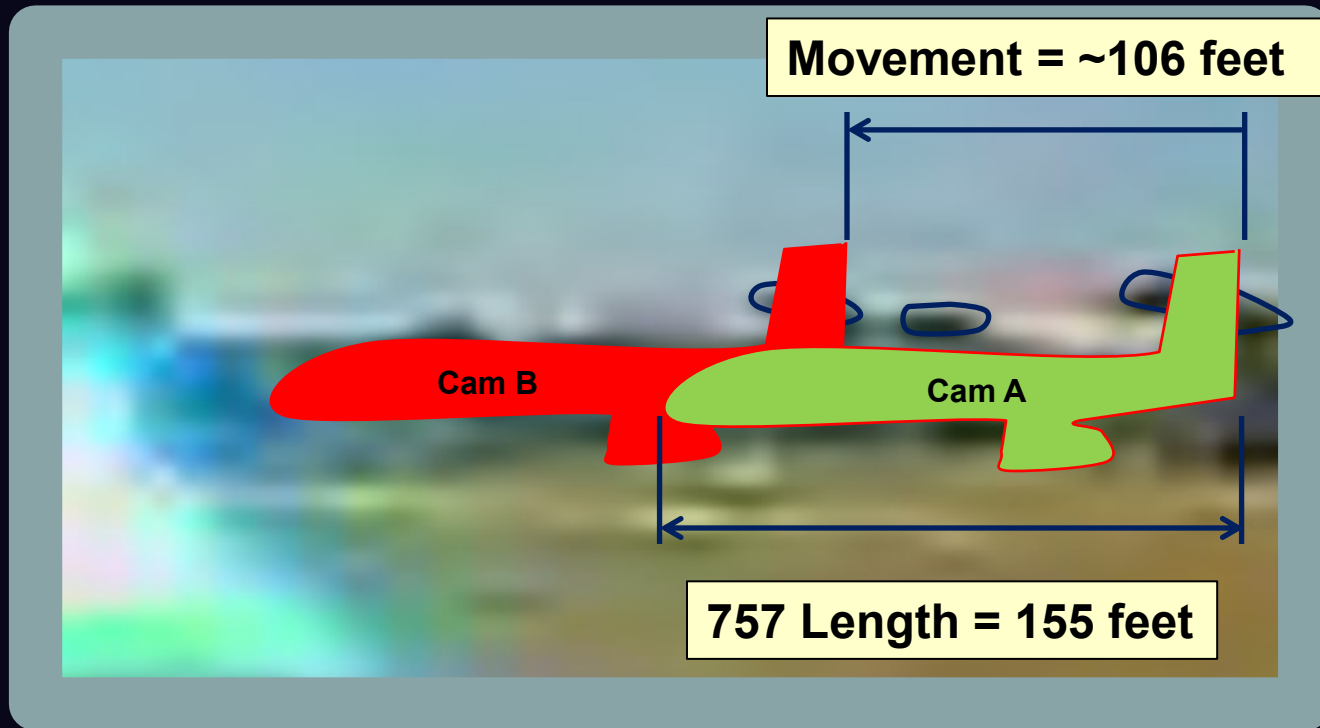
ScientistsFor911Truth.org

Pentagon Security Camera
Analysis

63

Timing Between Cameras

Approximately 0.136 sec



Note: 530 mph, = 777 feet/sec:
0.136 sec = 106 feet / 777 feet/sec
4 1/30^{ths} of a sec would be 0.1333 sec

Speed of the Approaching Aircraft: about 542 MPH

- Mickey Bell's truck driving away
 - Establishes 4/30 of a second difference between security cameras (0.1333 sec)
- Plane moves ~106 feet between frames
 - At 0.1333 sec difference between frames
 - ~795 feet/sec
 - ~542 MPH (plus measurement error)
- Independent verification of 530 – 560 MPH

Pentagon Security Camera Analysis

LARGE PIECE OF DEBRIS

Large Debris Piece May Have Been Captured In Transit – 1



Large Debris Piece May Have Been Captured In Transit – 2



Large Debris Piece May Have Been Captured In Transit – 3



Large Debris Piece May Have Been Captured In Transit – 4



Large Debris Piece - North



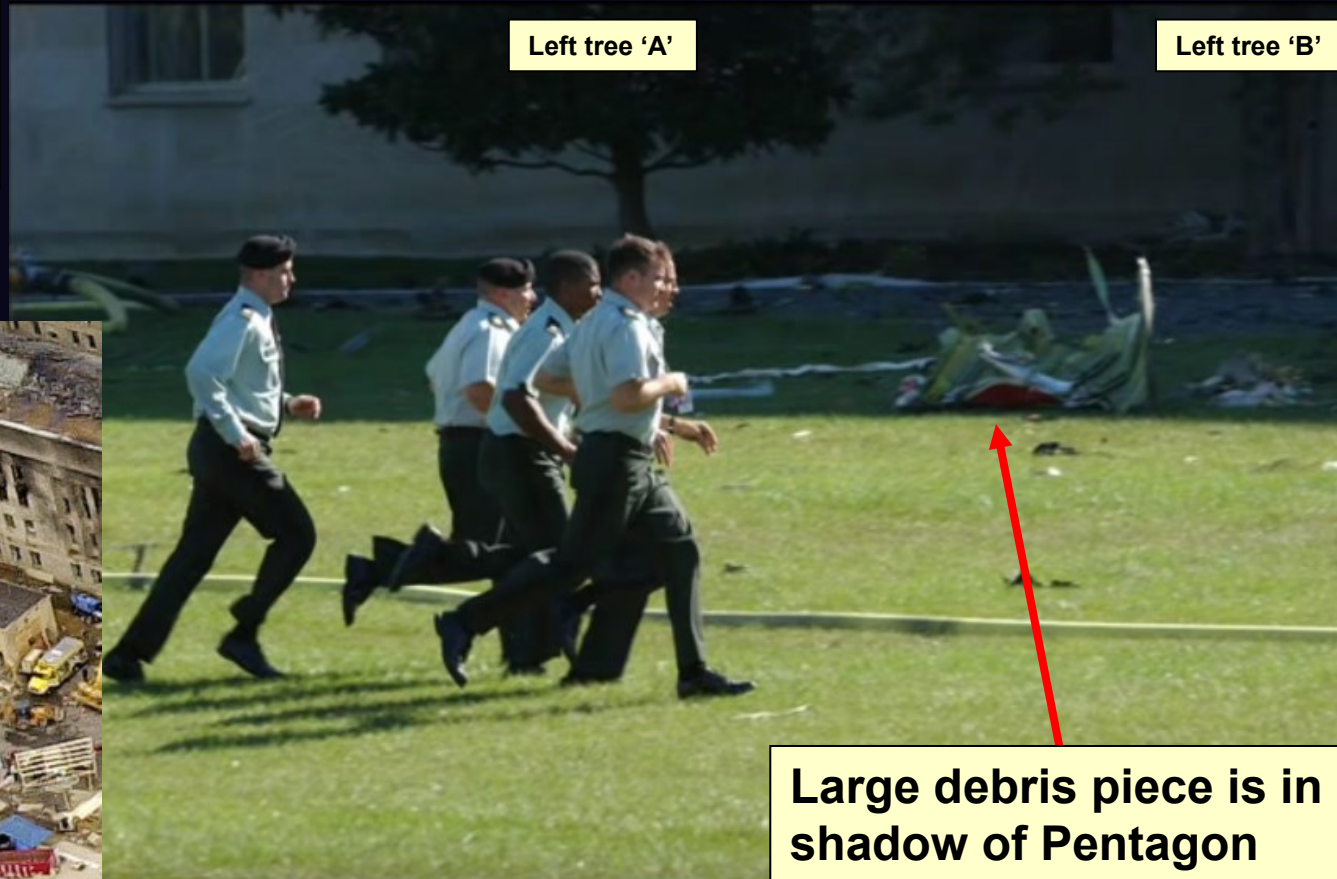
Civil / structural access points

ScientistsFor911Truth.org

**Pentagon Security Camera
Analysis**

Large Debris Piece - North

Location of debris: on grass just inside shadow line, between trees ('A' and 'B').



ScientistsFor911Truth.org

Pentagon Security Camera
Analysis

Large Debris Piece – North

As sun moves, large debris piece no longer in shadow of Pentagon



Photo by
Luke Frazza

ScientistsFor911Truth.org

Pentagon Security Camera
Analysis

73

Large Debris Piece – North



Photo by
Luke Frazza

ScientistsFor911Truth.org

Pentagon Security Camera
Analysis

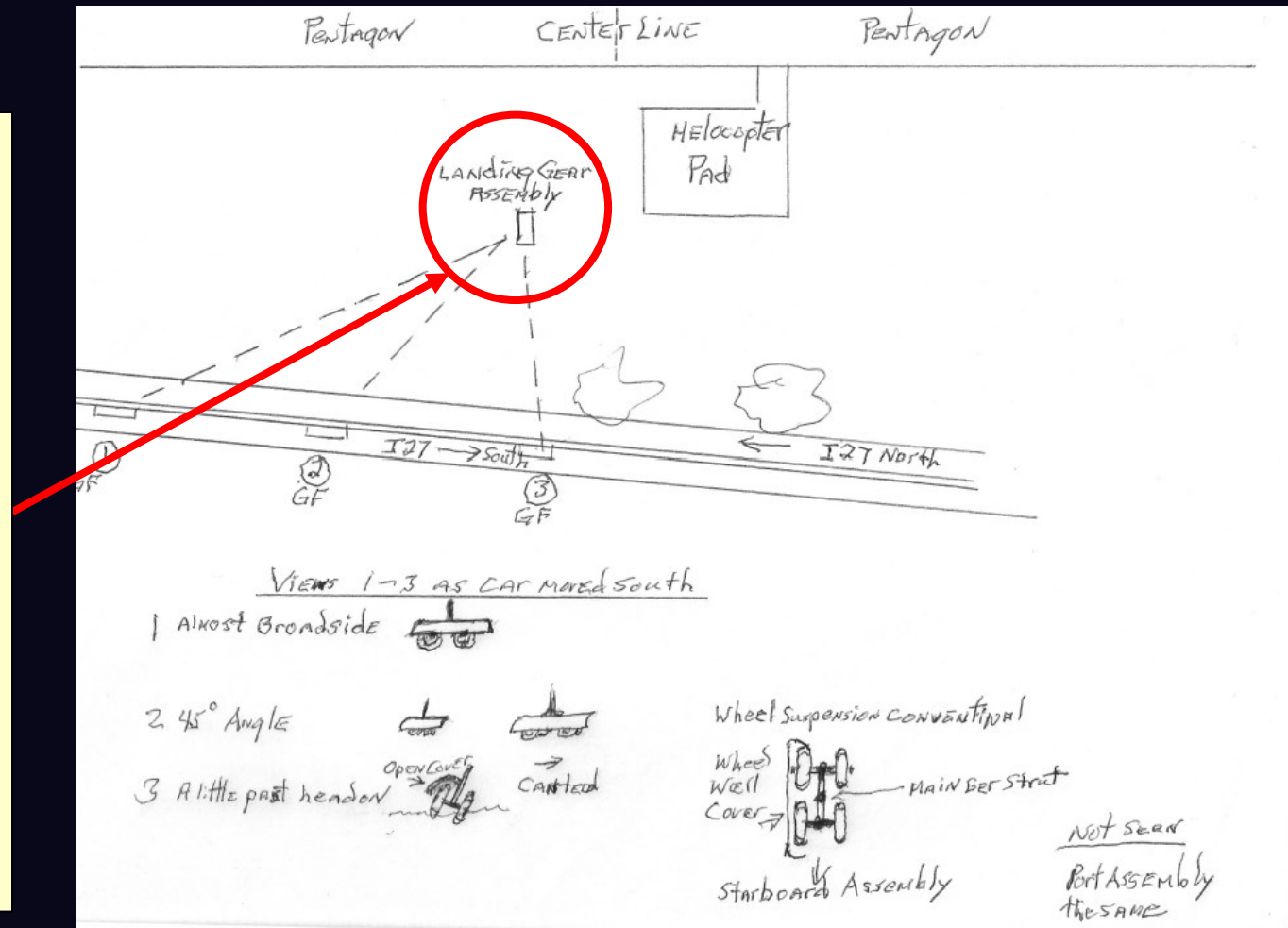
74

Sketch with Gordon Ferrie's Sworn Jurat Affidavit

“Landing gear” that Gordon Ferrie attests he saw was located on this diagram by him.

This is at about the same location as this large piece of debris shown earlier in this section.

Photograph of a different large piece in this area is not in my collection (except medical gurneys).



Questions