

Explaining Sheet Metal Pieces

Frequently called Luke Frazza's
“Wings”

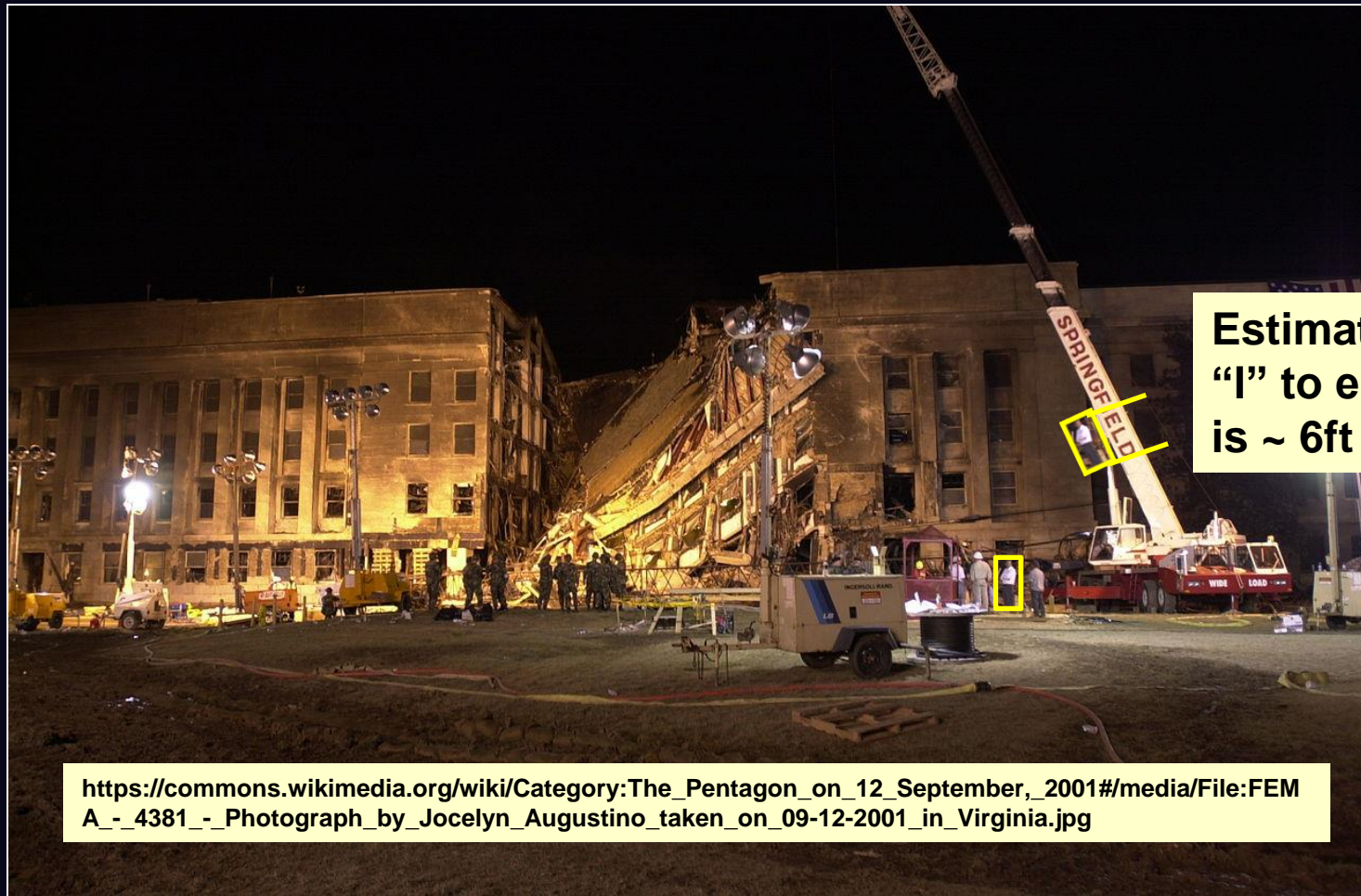
Luke Frazza's "Wings"

- Luke Frazza took a photo of long pieces of sheet metal being lifted from in from of the damaged area of the Pentagon
 - Some people claimed they were the missing wings
 - These have been identified as sheet metal roofs ("doghouses") over mechanical equipment on north side of the gouged retaining wall

Luke Frazza's Photo



Using Height of Man for Scale



Luke Frazza's Photo with Notes

Using crane letter size, both segments look like about 10' long (on the un-mangled side)
Too short to be wing segments



Doghouse Roof: Another Image



Missing Construction Trailers

- The previous illustration does not show construction trailers that will be seen later
- Michael DiPaula notes their weekend removal

I was in the trailer. . . . We call the outside area here the lay-down area. It's the heliport area, and out there . . . we have all of our construction trailers. We were in the process, right prior to September 11, of cleaning out the area. We moved all the trailers. Actually, on the 10th we had some other trailers that were just leaving because we were getting ready to turn them back over to the building. And **we had one trailer left, which was the Singleton trailer out there. . . .**



Mechanical Doghouses

Two construction trailers moved on Sept 10th

Doghouses covering
mechanical equipment



Doghouses vs. Plane Location

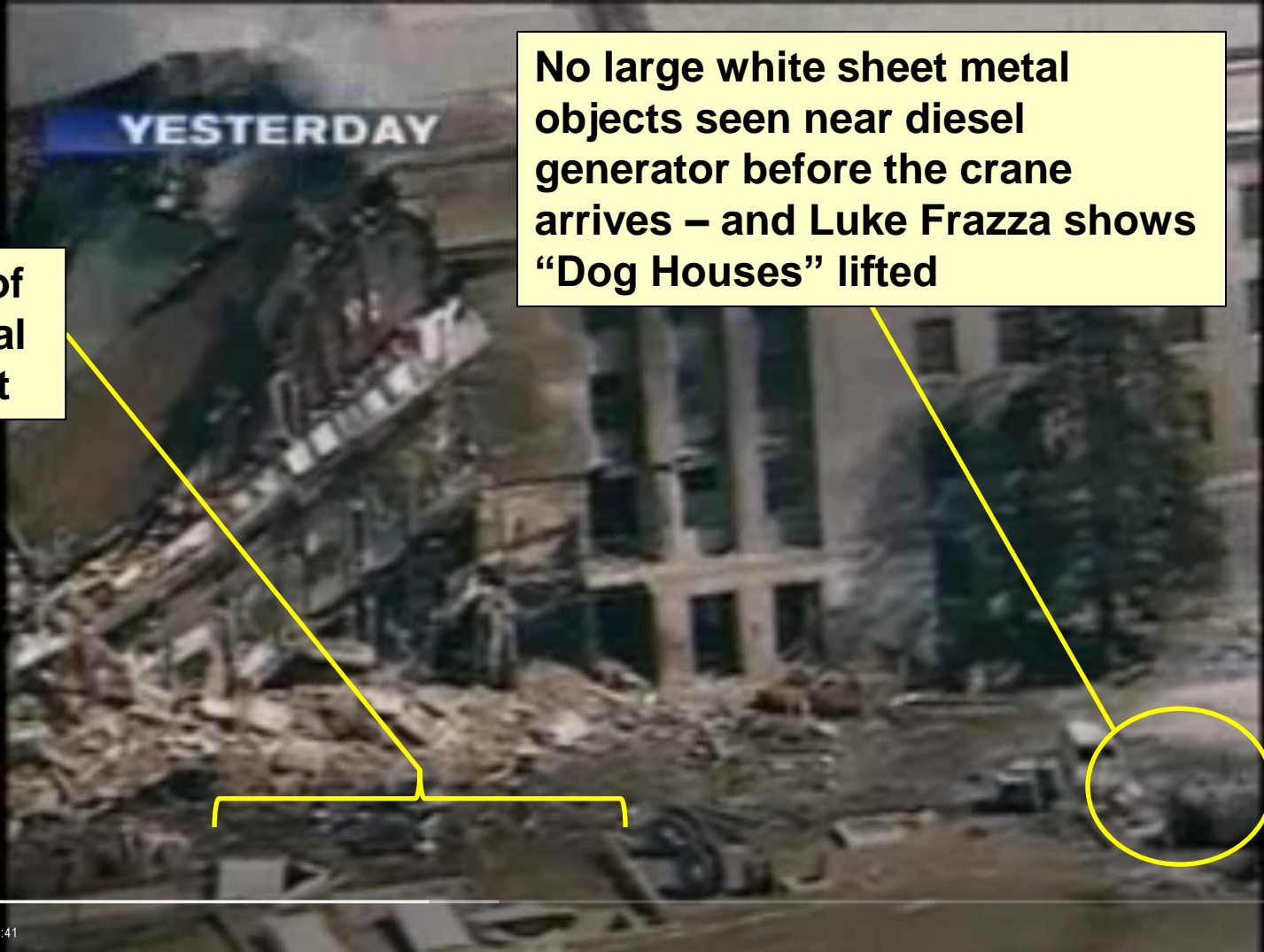


Mechanical Doghouses

**Doghouses covering
mechanical equipment**



Lifted Sheet Metal Not in this Area



Doghouse Roofing Missing

Location of mechanical equipment without roofs



fox5exclusive

FOX 5
NEWS

Play

11:56 / 41:41

Settings

Doghouse Roofing Missing

Location of mechanical equipment without roofs



Play

15:46 / 41:41

Settings

Comparison of Pre-Post Images

