

Lloyde England's Taxicab on 9/11

Resolving the Long Running Controversy

Wayne H. Coste, PE, Member, Scientists for 9/11 Truth

Member, ScientistsFor911Truth.org

**Lloyde England's Taxicab on 9/11;
Resolving the Long Running Controversy**

A Long Running Controversy

- The incident at the Pentagon where Lloyd England's taxi was speared by a piece of a light pole has become a long running controversy among those with an interest in the events of 9/11
- Human interest stories about the incident were brief and did not fully document detailed questions about the mechanics of the incident

Subsequent Interviews

- A series of interviews were conducted by a group – self-identified as the Citizens Investigation Team (or C.I.T)
- Persons conducting the interviews were supposedly trying to document what *actually* happened
- C.I.T.'s resulting videos demonstrate an interest in *storytelling* instead

Lloyde England's Taxicab on 9/11; Resolving the Long Running Controversy

INCIDENT OVERVIEW

Member, ScientistsFor911Truth.org

Lloyde England's Taxicab on 9/11;
Resolving the Long Running Controversy

Accident Scene Reconstruction

- Review the Loyde Taxicab incident:

When treated as an accident scene using the physics of motion, the location of the taxi and debris supports Loyde's "Survivor Fund" statement.

The location of most debris from light pole #1 and #2 is documented in the photographic record.

The location of the lamp heads from light poles #1 and #2 is consistent with a high speed impact of the lamp post mast – at a point below the attachment point of the lamp support arms.

Loyde describes a "long" pole (like a javelin) that impaled his taxi.

*The lower lamp support arms are approximately **11.5 feet long***

Member, ScientistsFor911Truth.org

Loyde England's Taxicab on 9/11;
Resolving the Long Running Controversy

Explosion 5 Minutes After Impact at 9:43 (Probably Propane Tank)



Photo by
Daryl Donley

Member, ScientistsFor911Truth.org

Lloyd England's Taxicab on 9/11;
Resolving the Long Running Controversy

Taxi Photographed on South Side of Columbia Pike Overpass



Member, ScientistsFor911Truth.org

Lloyde England's Taxicab on 9/11;
Resolving the Long Running Controversy

Taxi Photographed on South Side of Columbia Pike Overpass



Member, ScientistsFor911Truth.org

Lloyd England's Taxicab on 9/11;
Resolving the Long Running Controversy

Windshield and Rear Seat Are Damaged By “Long pole”

Imprecise use of the word “pole” and “**long**” has opened the door to confusion. The street lamps have three “pole” segments that are “**long**” compared to their width.



Member, ScientistsFor911Truth.org

Lloyde England's Taxicab on 9/11;
Resolving the Long Running Controversy

Small Holes in Rear Seat Fabric



Source: <https://www.youtube.com/watch?v=yC3LRdjocmc> at 50:38

Member, ScientistsFor911Truth.org

Lloyde England's Taxicab on 9/11;
Resolving the Long Running Controversy

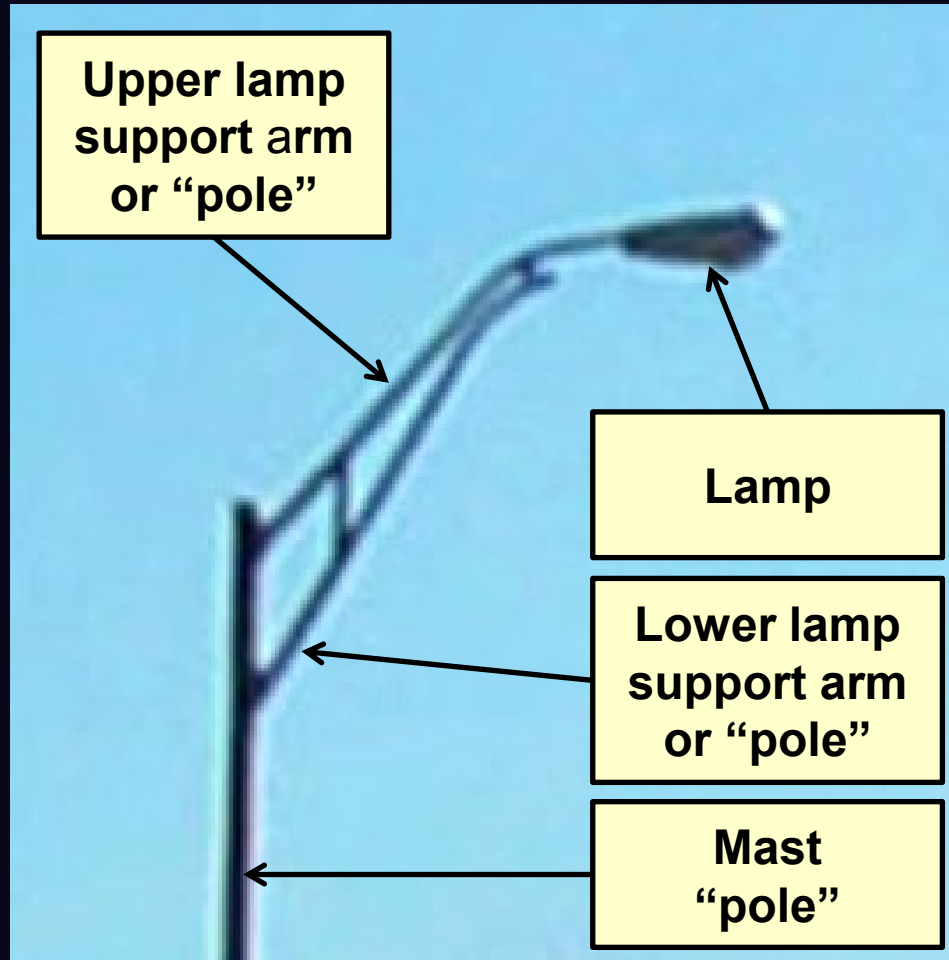
Lloyde England's Taxicab on 9/11; Resolving the Long Running Controversy

LAMP POST PARTS

Member, ScientistsFor911Truth.org

Lloyde England's Taxicab on 9/11;
Resolving the Long Running Controversy

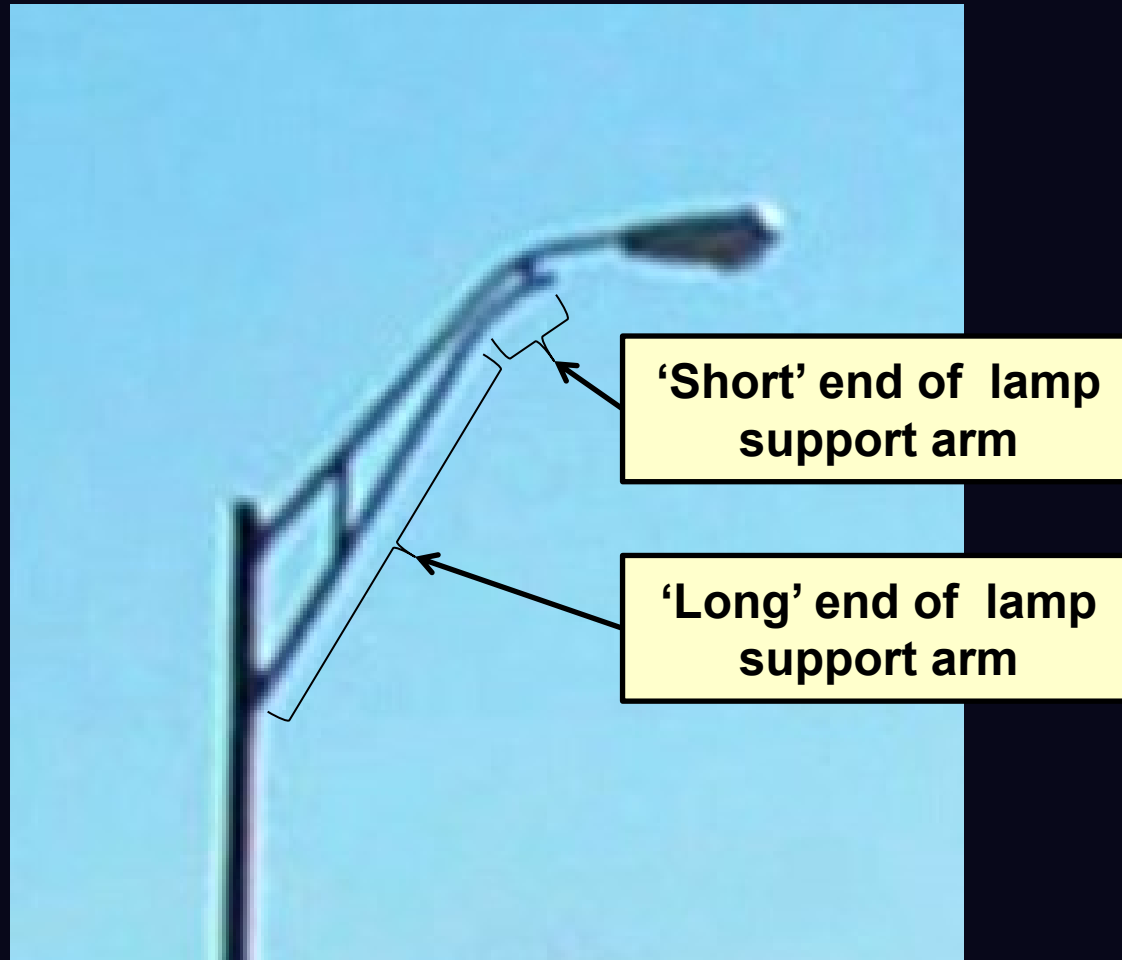
Lamp Post Parts



Member, ScientistsFor911Truth.org

Lloyde England's Taxicab on 9/11;
Resolving the Long Running Controversy

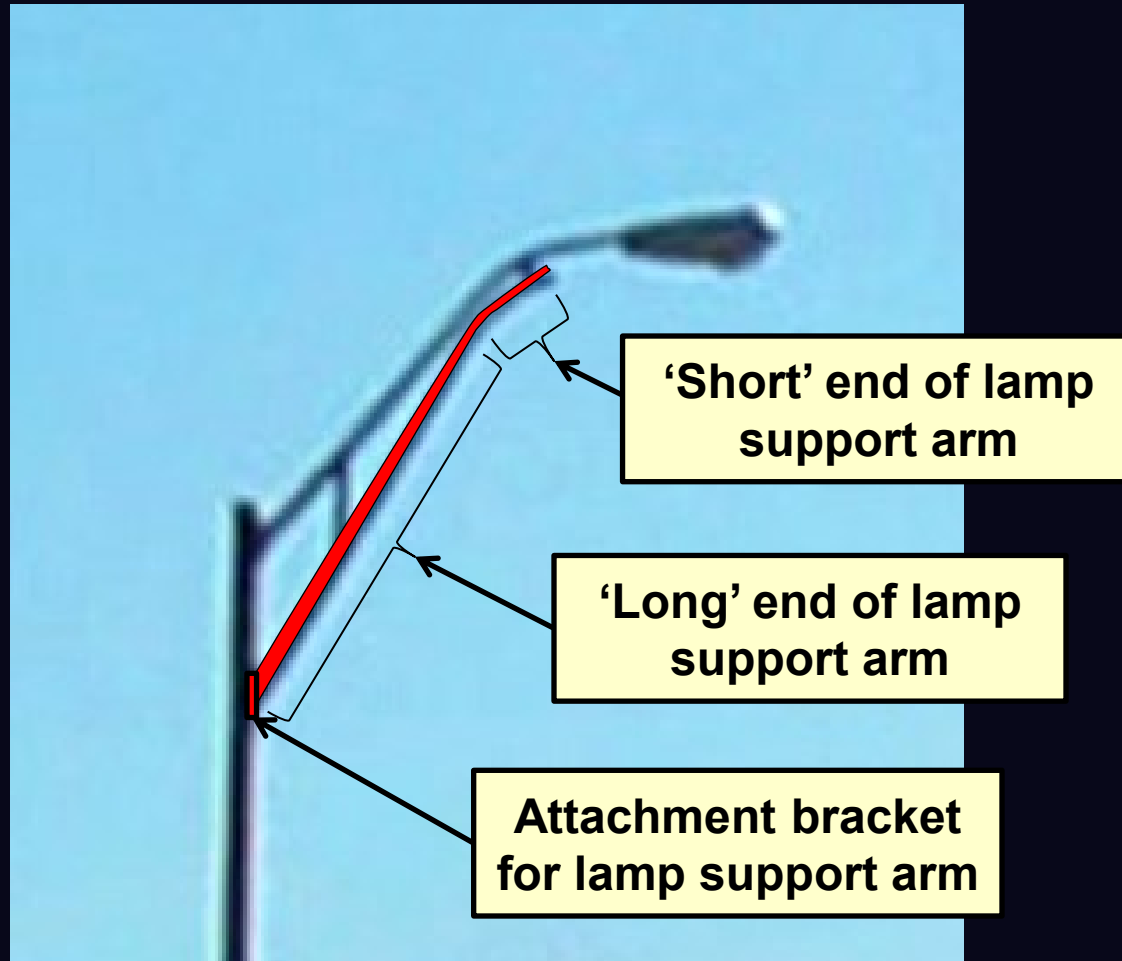
Lamp Post Parts



Member, ScientistsFor911Truth.org

Lloyde England's Taxicab on 9/11;
Resolving the Long Running Controversy

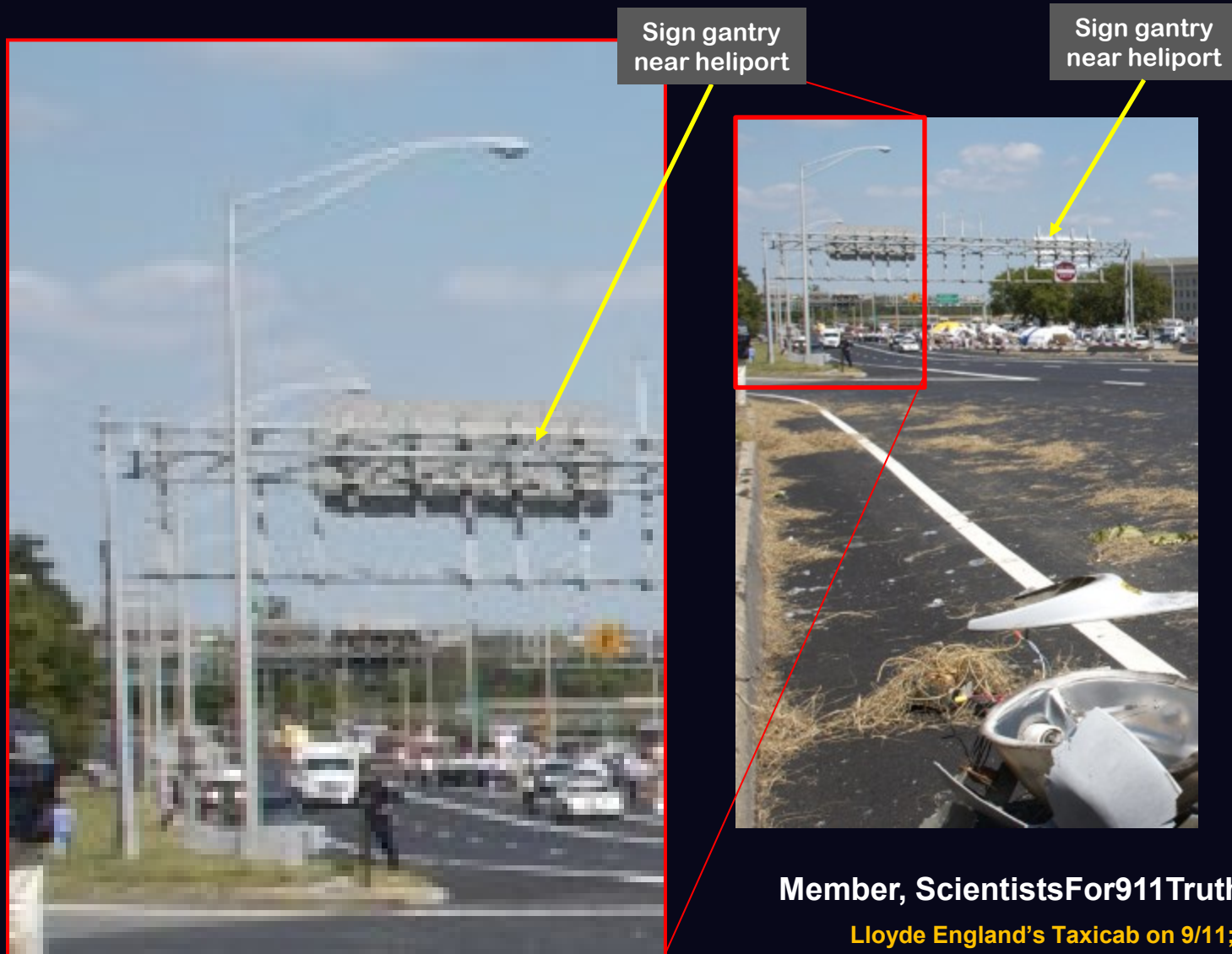
Lower Lamp Support Arm



Member, ScientistsFor911Truth.org

Lloyde England's Taxicab on 9/11;
Resolving the Long Running Controversy

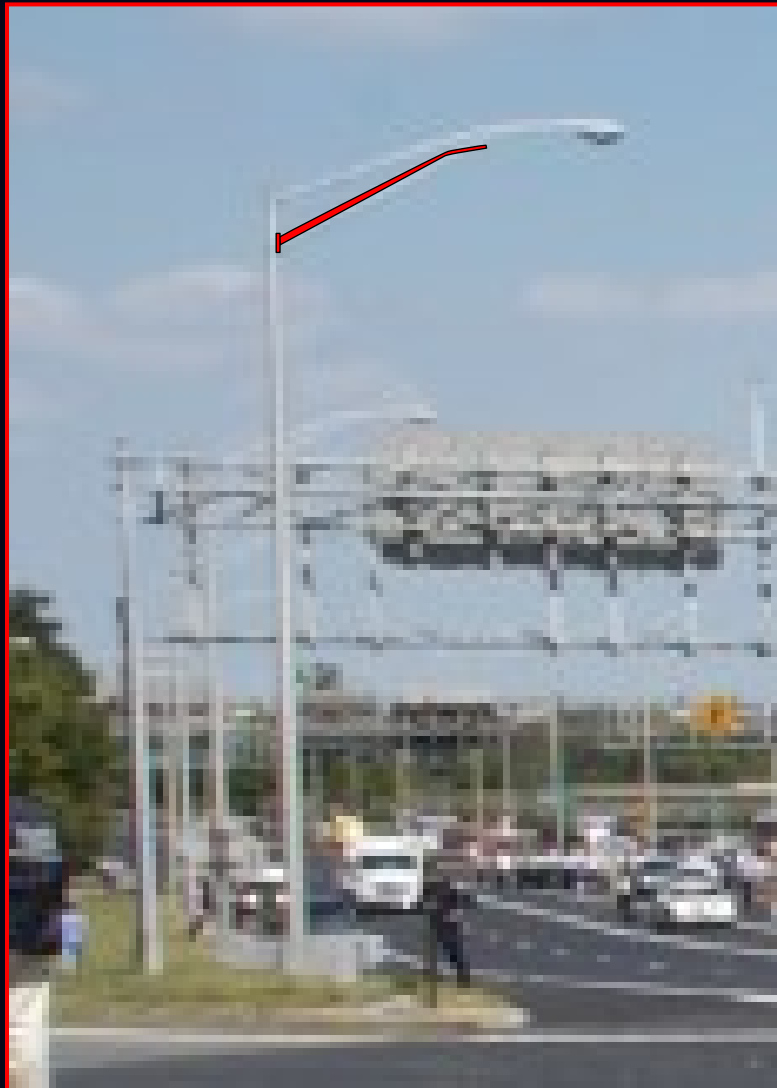
Photo of Neighboring Lamp Post



Member, ScientistsFor911Truth.org

Lloyde England's Taxicab on 9/11;
Resolving the Long Running Controversy

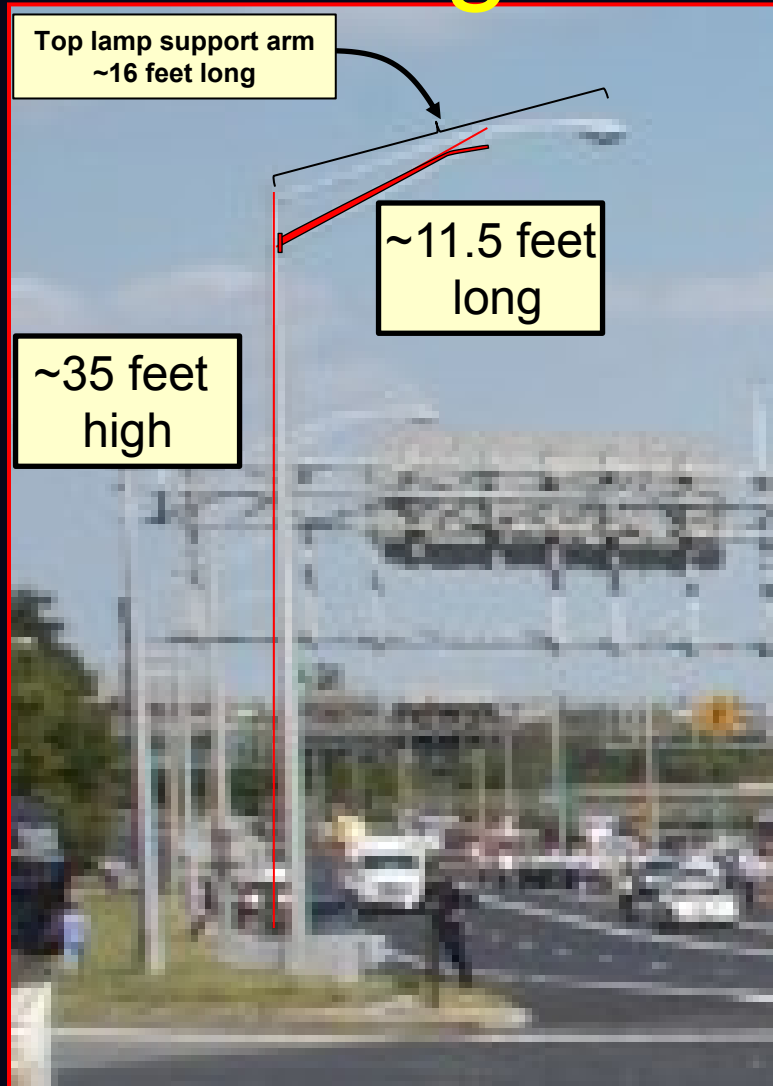
Lamp Support Arm Highlighted



Member, ScientistsFor911Truth.org

Lloyde England's Taxicab on 9/11;
Resolving the Long Running Controversy

Estimating Lower Lamp Support Arm Length to be ~11.5 feet



Member, ScientistsFor911Truth.org

Lloyde England's Taxicab on 9/11;
Resolving the Long Running Controversy

Detail of Lower Lamp Support Arm (Note: This is Photo of Light Pole #3)



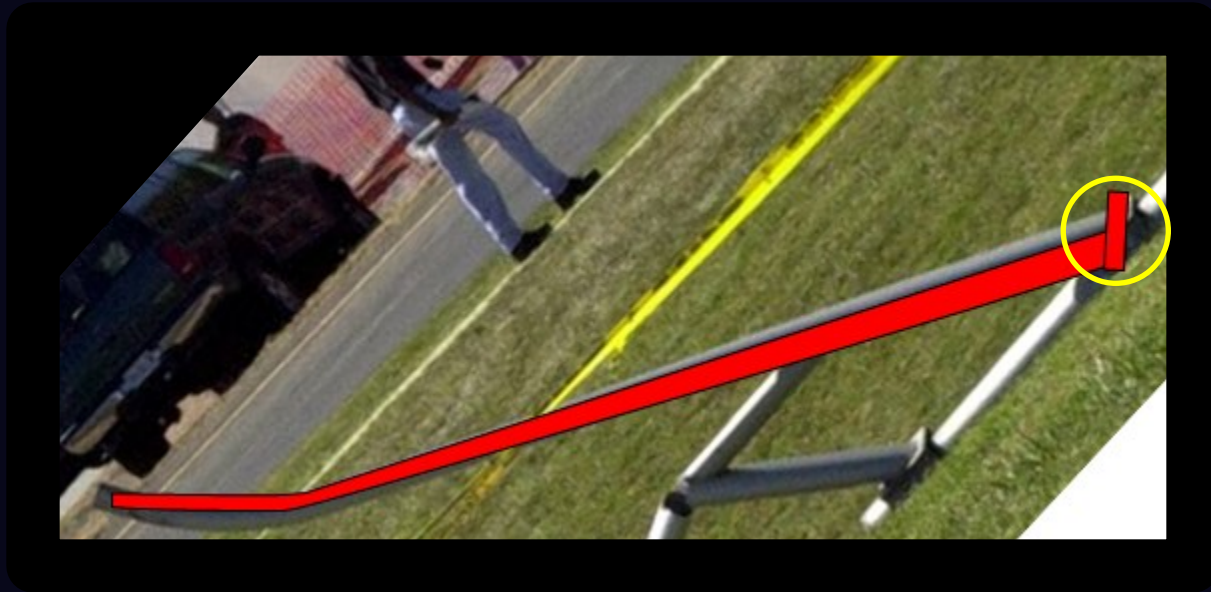
Lower lamp support arm is about 11 ½ feet long

NOTE: CIT minimizes the length and claims only 6 feet long

Member, ScientistsFor911Truth.org

Lloyde England's Taxicab on 9/11;
Resolving the Long Running Controversy

Detail of Lower Lamp Support Arm (Note: This is Photo of Light Pole #3)



Lower lamp support arm is about 11 ½ feet long

NOTE: CIT minimizes the length and claims only 6 feet long

Member, ScientistsFor911Truth.org

Lloyd England's Taxicab on 9/11;
Resolving the Long Running Controversy

C.I.T. Presents False Dimensions

 Loose Change Forum



Craig Ranke CIT

Advanced Member

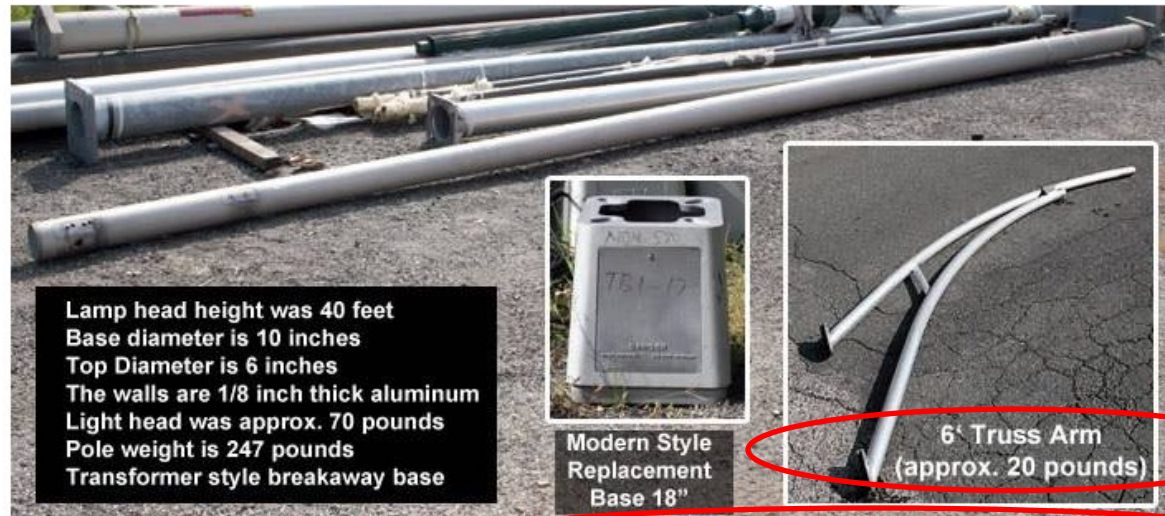
Apr 11, 2007 #1

This is one of the most important pieces of evidence in regards to the attack on the Pentagon therefore our research into it has been extremely detailed and thorough.

[...]

We had a tour of the VDOT (Virginia Department of Transportation) and physically examined the same style light poles.

Here are the dimensions:



[NOTE: Length of Truss Arm for light pole #2 is at least 11.5 feet.]

And here is a video of me doing a squat lift to pick up the heavier base end of the pole which is what Lloyd claimed was sticking out over the hood of his car:

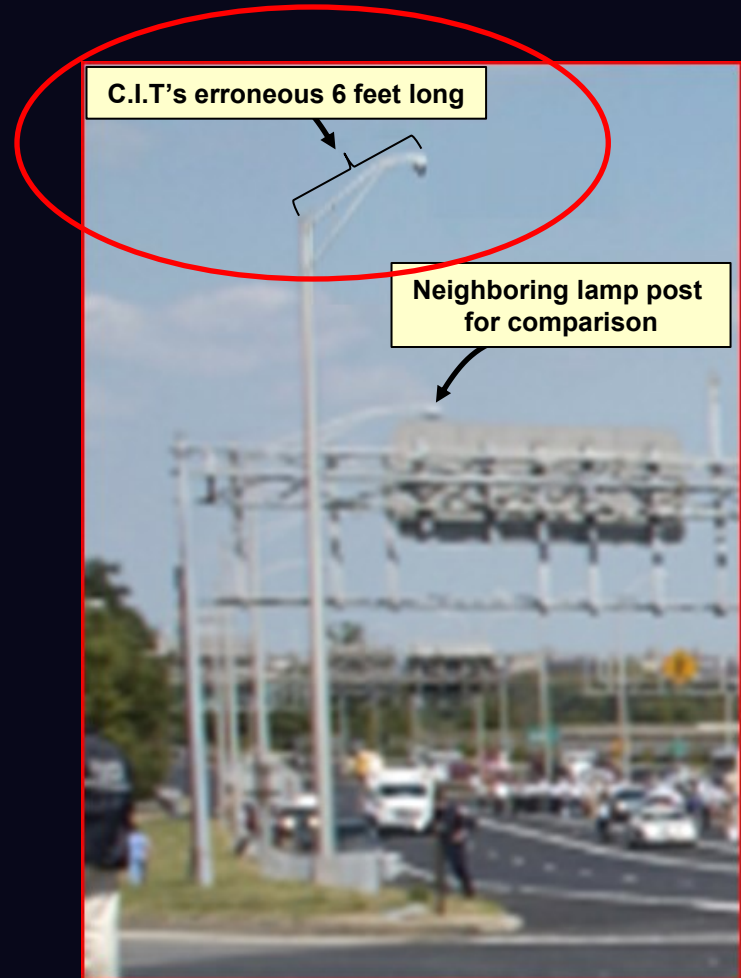
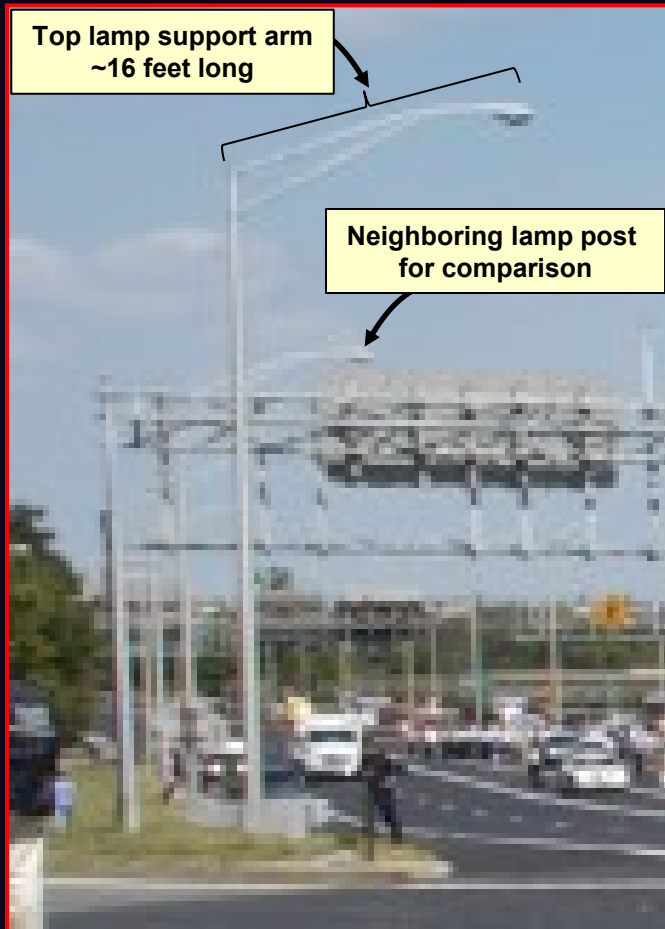
<https://www.tapatalk.com/groups/loosechangeforum/lloyd-england-39-s-critical-account-revisited-t7305.html>

Posted: Craig Ranke CIT, Apr 11, 2007

Member, ScientistsFor911Truth.org

Lloyde England's Taxicab on 9/11;
Resolving the Long Running Controversy

Actual Lamp Post Truss Arm vs. C.I.T. Lamp Post Truss Arm



Member, ScientistsFor911Truth.org

Lloyde England's Taxicab on 9/11;
Resolving the Long Running Controversy

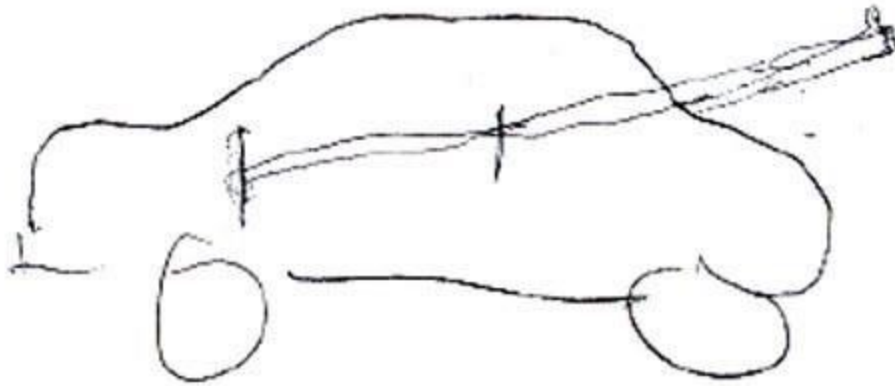
Lloyde England's Taxicab on 9/11; Resolving the Long Running Controversy

LOWER LAMP SUPPORT ARM

Member, ScientistsFor911Truth.org

Lloyde England's Taxicab on 9/11;
Resolving the Long Running Controversy

Doodle by Lloyd England



40 mph
40 feet
skidded

NOTE:
At 40 mph,
typical driver
reaction time and
stopping distance
is about 164 feet

Member, ScientistsFor911Truth.org

Lloyd England's Taxicab on 9/11;
Resolving the Long Running Controversy

Typical Reaction / Stopping Time

At 40 mph, stopping distance with reaction time is estimated to be 164 feet.

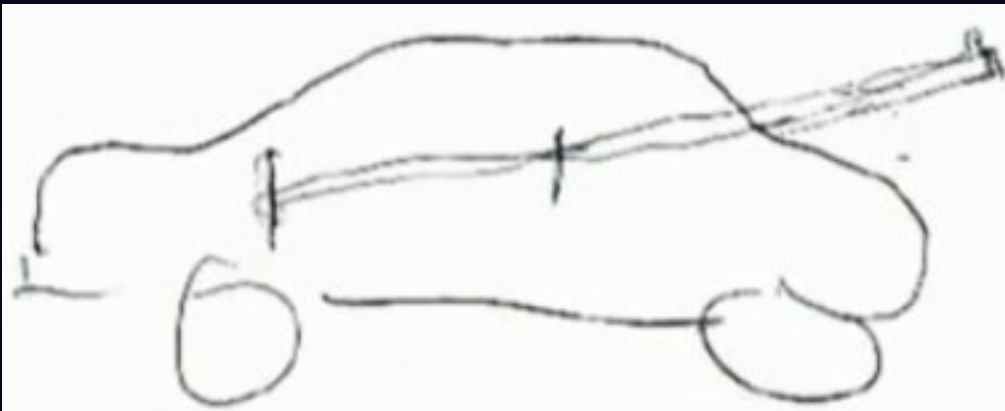
MPH	Ft./Sec.	Braking Deceleration Distance	Perception Reaction Distance	Total Stopping Distance	Implied Reaction Time
10	14.7	5	22	27	1.50
15	22	11	33	44	1.50
20	29.3	19	44	63	1.50
25	36	30	55	85	1.53
40	58.7	76	88	164	1.50
60	88	172	132	65	1.50

Source: http://nacto.org/docs/usdg/vehicle_stopping_distance_and_time_upenn.pdf

Member, ScientistsFor911Truth.org

Lloyde England's Taxicab on 9/11;
Resolving the Long Running Controversy

Town Car with 11.5 Foot Pole



11.5 foot pole is
consistent with
“Lloyd’s Doodle”

Member, ScientistsFor911Truth.org

Lloyd England's Taxicab on 9/11;
Resolving the Long Running Controversy

Lloyde vs. an 11.5 Foot Pole



Member, ScientistsFor911Truth.org

Lloyde England's Taxicab on 9/11;
Resolving the Long Running Controversy

Next to Loyde, the 11.5 Foot Pole Can be Called “Long”



Member, ScientistsFor911Truth.org

Lloyde England's Taxicab on 9/11;
Resolving the Long Running Controversy

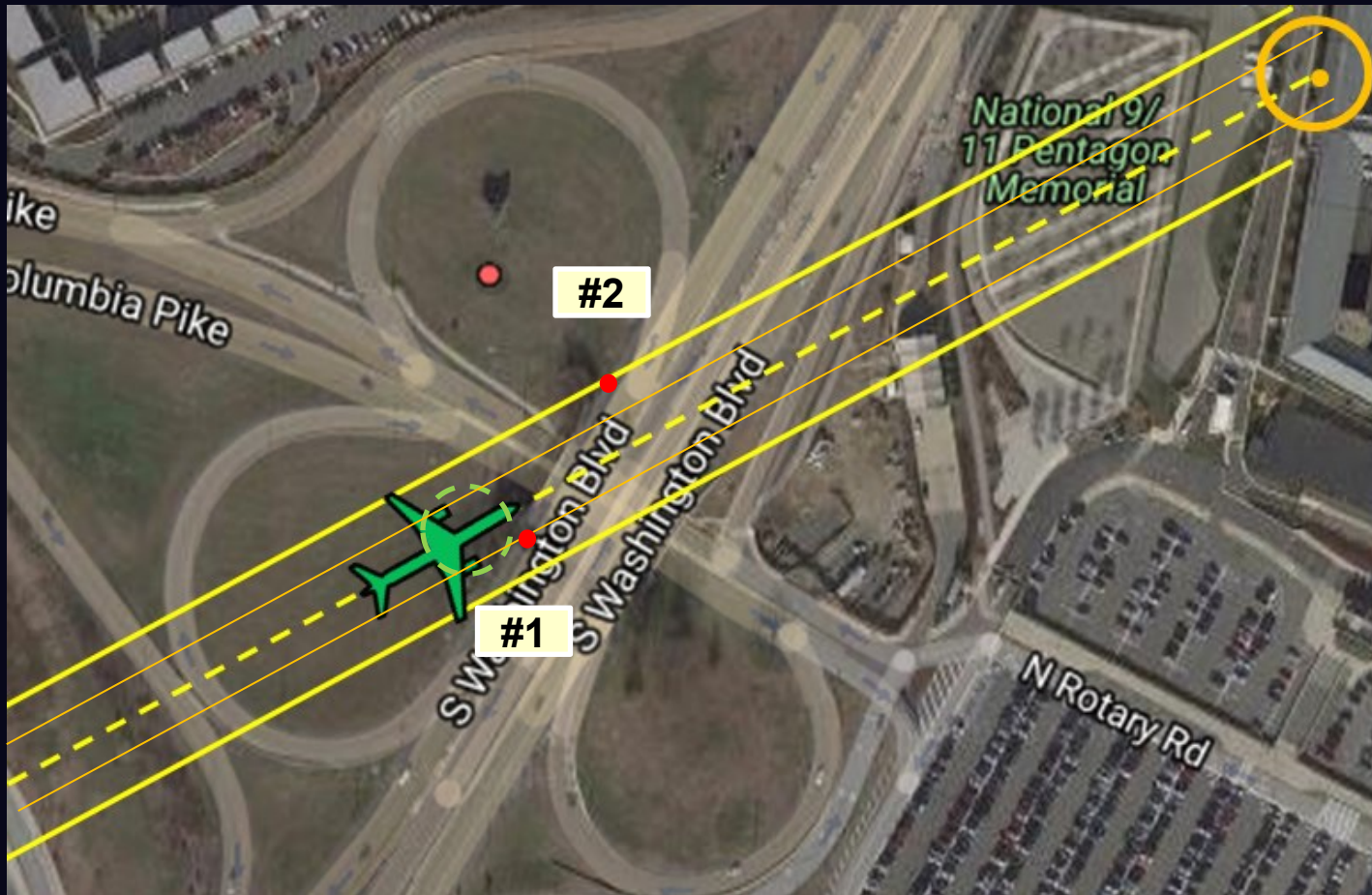
Lloyde England's Taxicab on 9/11; Resolving the Long Running Controversy

AIR PLANE FLIGHT PATH

Member, ScientistsFor911Truth.org

Lloyde England's Taxicab on 9/11;
Resolving the Long Running Controversy

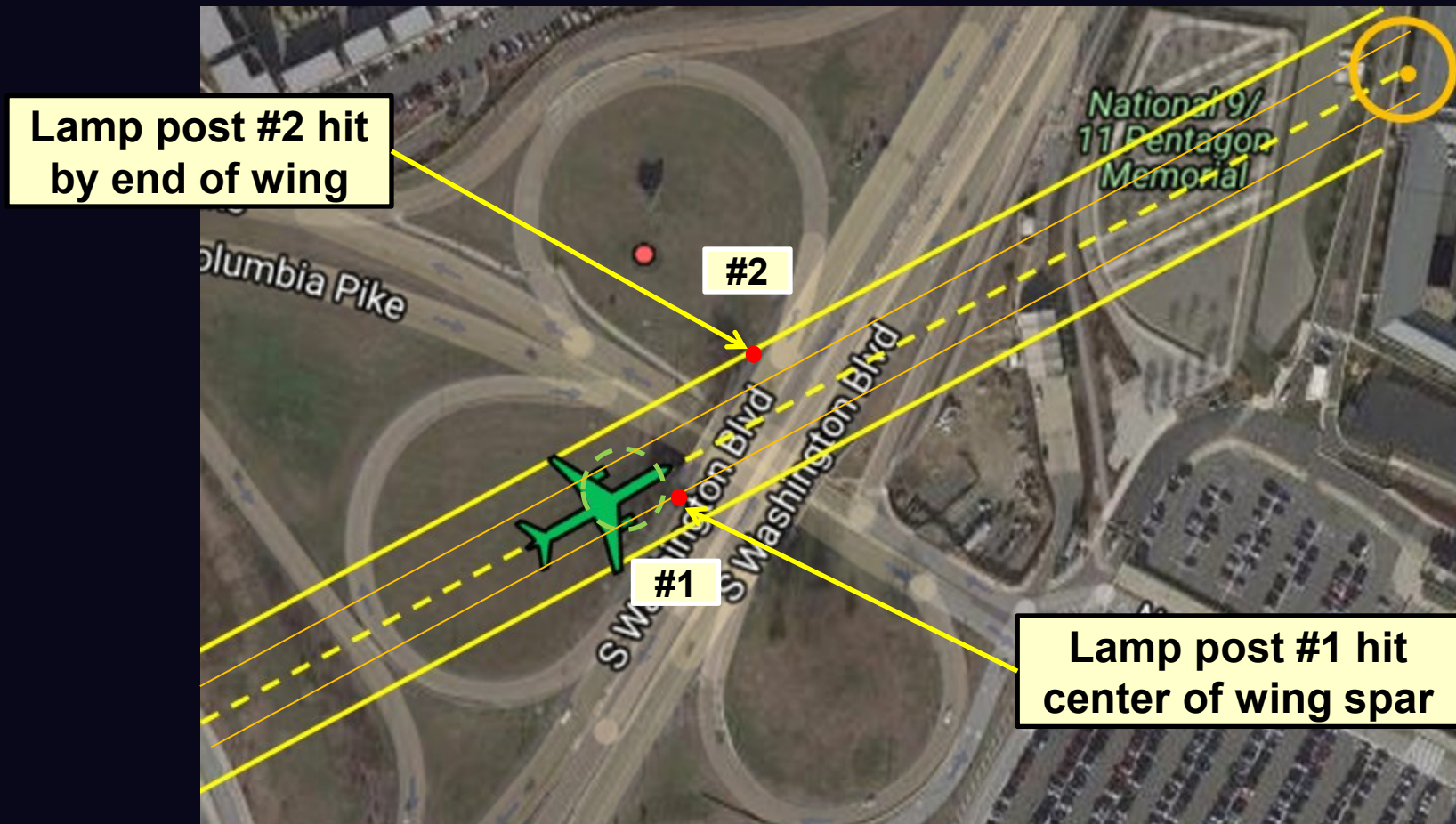
Clipping Tree Next to Washington Blvd. and Lamp Posts #1 & #2



Member, ScientistsFor911Truth.org

Lloyd England's Taxicab on 9/11;
Resolving the Long Running Controversy

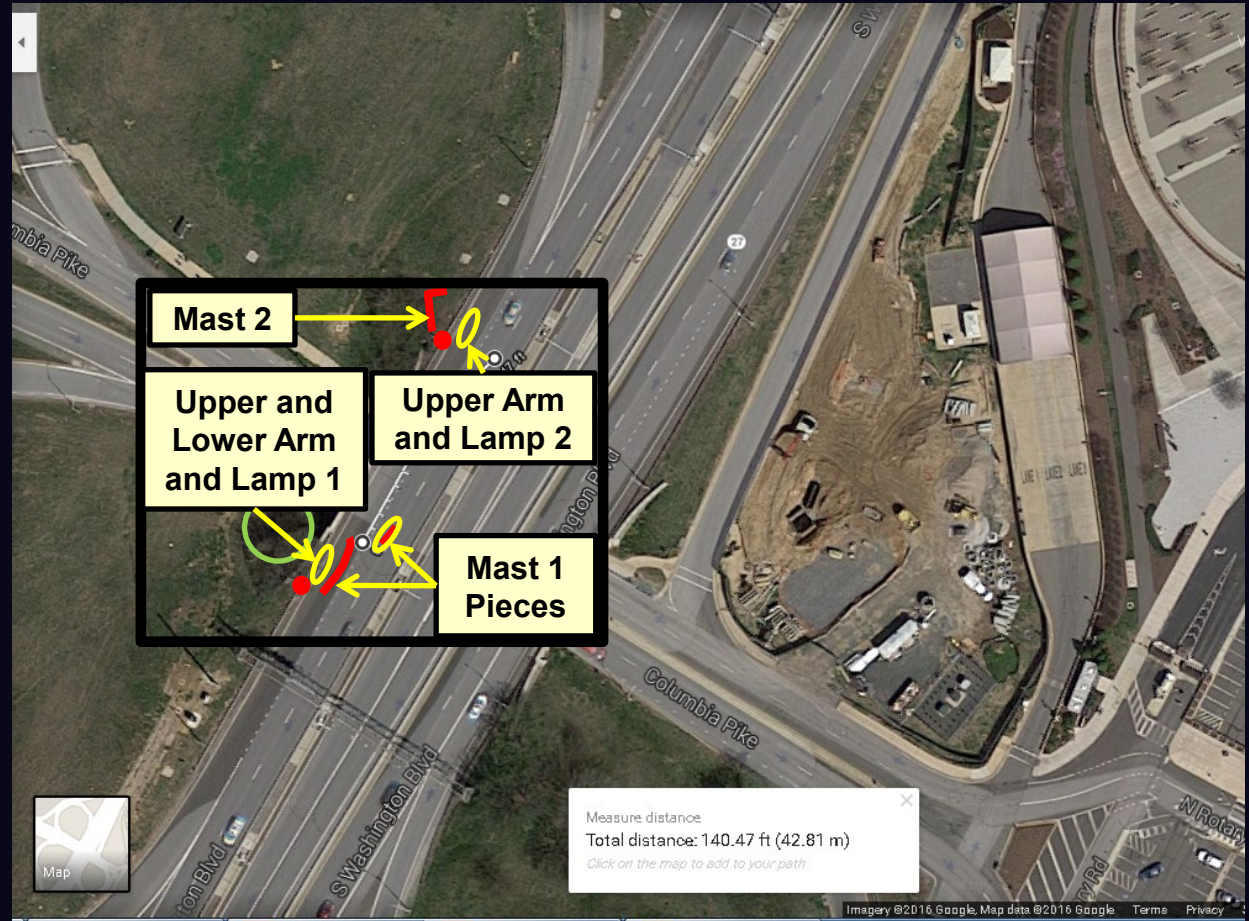
Clipping Tree Next to Washington Blvd. and Lamp Posts #1 & #2



Member, ScientistsFor911Truth.org

Lloyd England's Taxicab on 9/11;
Resolving the Long Running Controversy

Location of Lamp Post Debris

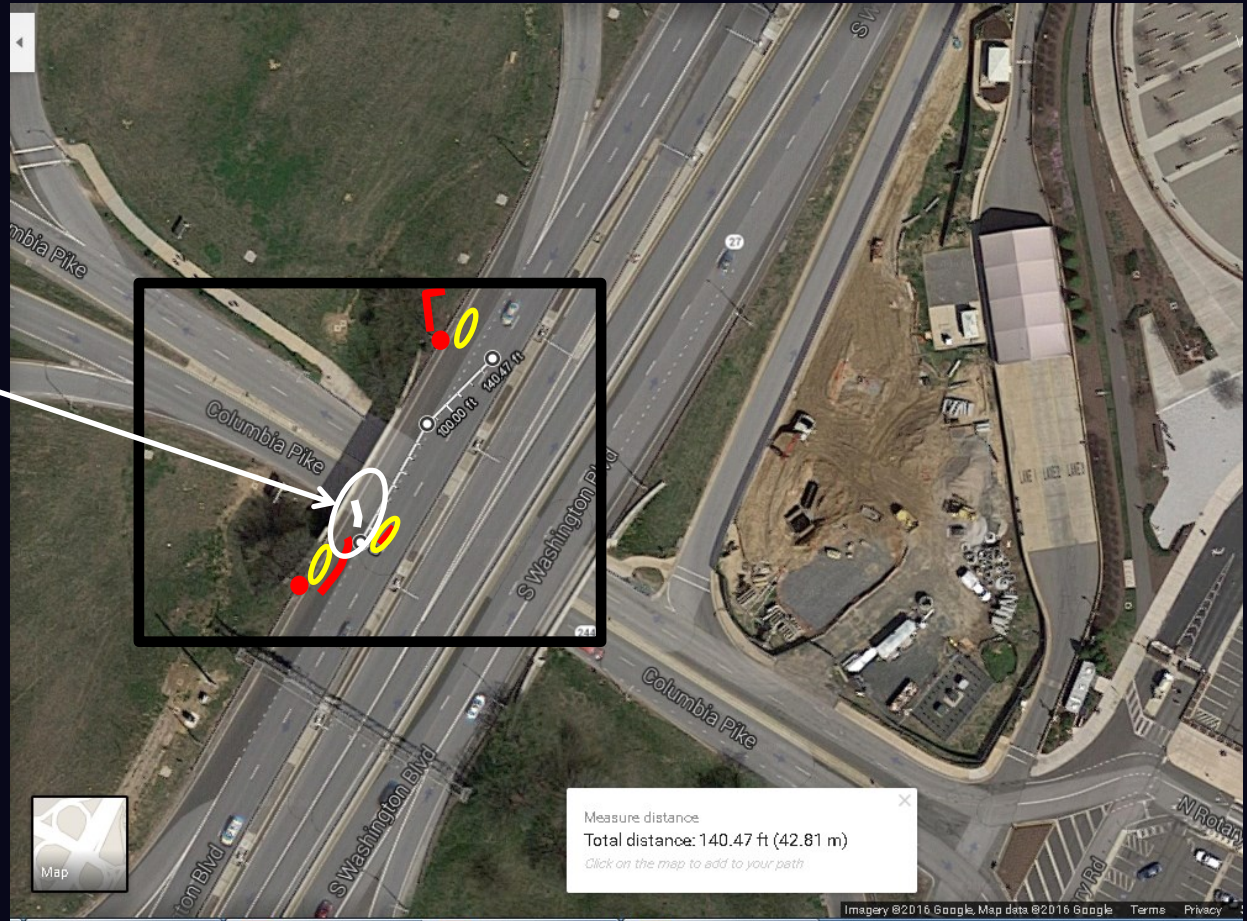


Member, ScientistsFor911Truth.org

Lloyd England's Taxicab on 9/11;
Resolving the Long Running Controversy

Location of Lower Lamp Support Arm of Lamp Post #2

Lower Lamp
Support Arm
from Lamp 2



Member, ScientistsFor911Truth.org

Lloyde England's Taxicab on 9/11;
Resolving the Long Running Controversy

Lloyde England's Taxicab on 9/11; Resolving the Long Running Controversy

REMOVING THE POLE

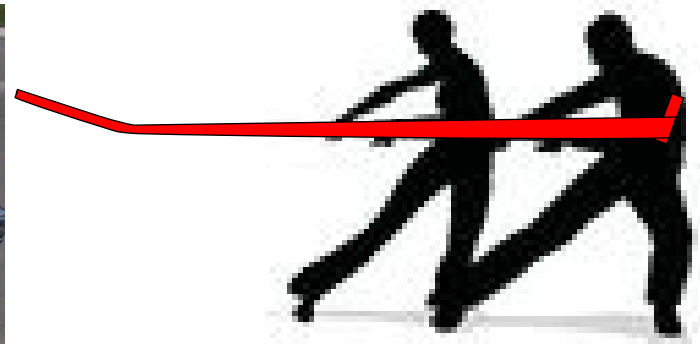
Member, ScientistsFor911Truth.org

Lloyde England's Taxicab on 9/11;
Resolving the Long Running Controversy

Removing the 11.5 Foot Pole Requires Significant Exertion

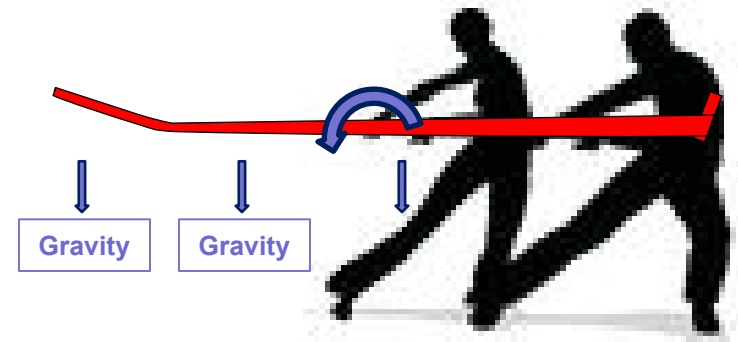
- Goal was to remove the pole without additional damage to the taxi
 - Repairs expected to return taxi to service
- Two men at end of a long “moment” arm

Town Car



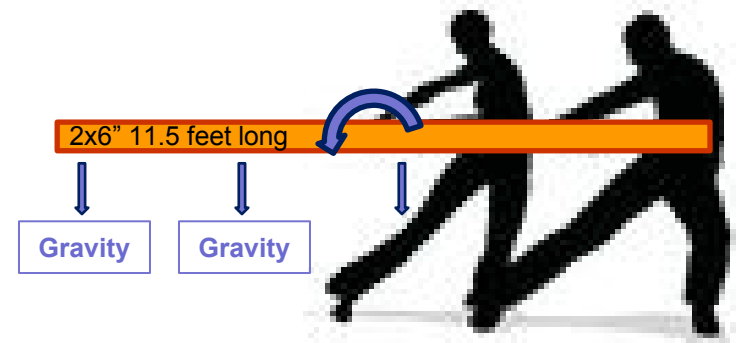
Removing the 11.5 Foot Pole Requires Significant Exertion

- Gravity creates a “moment” that must be resisted
- Holding the pole up requires significant effort
 - Weight of the pole estimated at ~22.9 lb
 - Moment is ~120 ft-lb of torque from the end



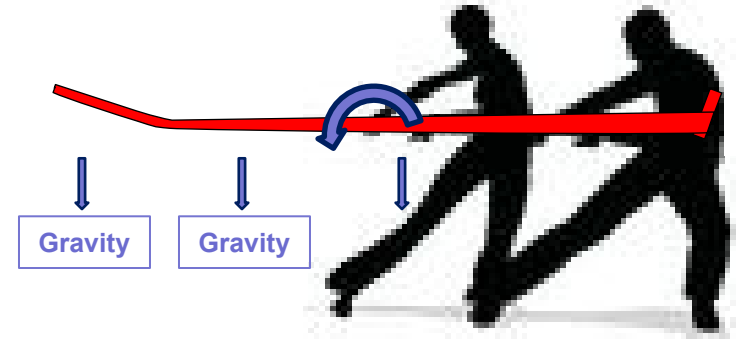
Lifting an 11.5 Foot Long 2x6 Piece of Lumber From One End

- Gravity creates a “moment” that must be resisted
- Holding the board up requires significant effort
 - Weight of 2x6 is ~22.3 lb
 - Moment is ~130 ft-lb of torque from the end



Daryl Donley Captures Explosion at 9:42 and 40 seconds

- Explosion at 9:42 and 40 seconds captured by Daryl Donley, NBC and CBS
- About 5 minutes after plane hits the lamp posts



Member, ScientistsFor911Truth.org

Lloyd England's Taxicab on 9/11;
Resolving the Long Running Controversy

Lloyde England's Taxicab on 9/11; Resolving the Long Running Controversy

C.I.T. INTERVIEWS AND VIDEOS

Member, ScientistsFor911Truth.org

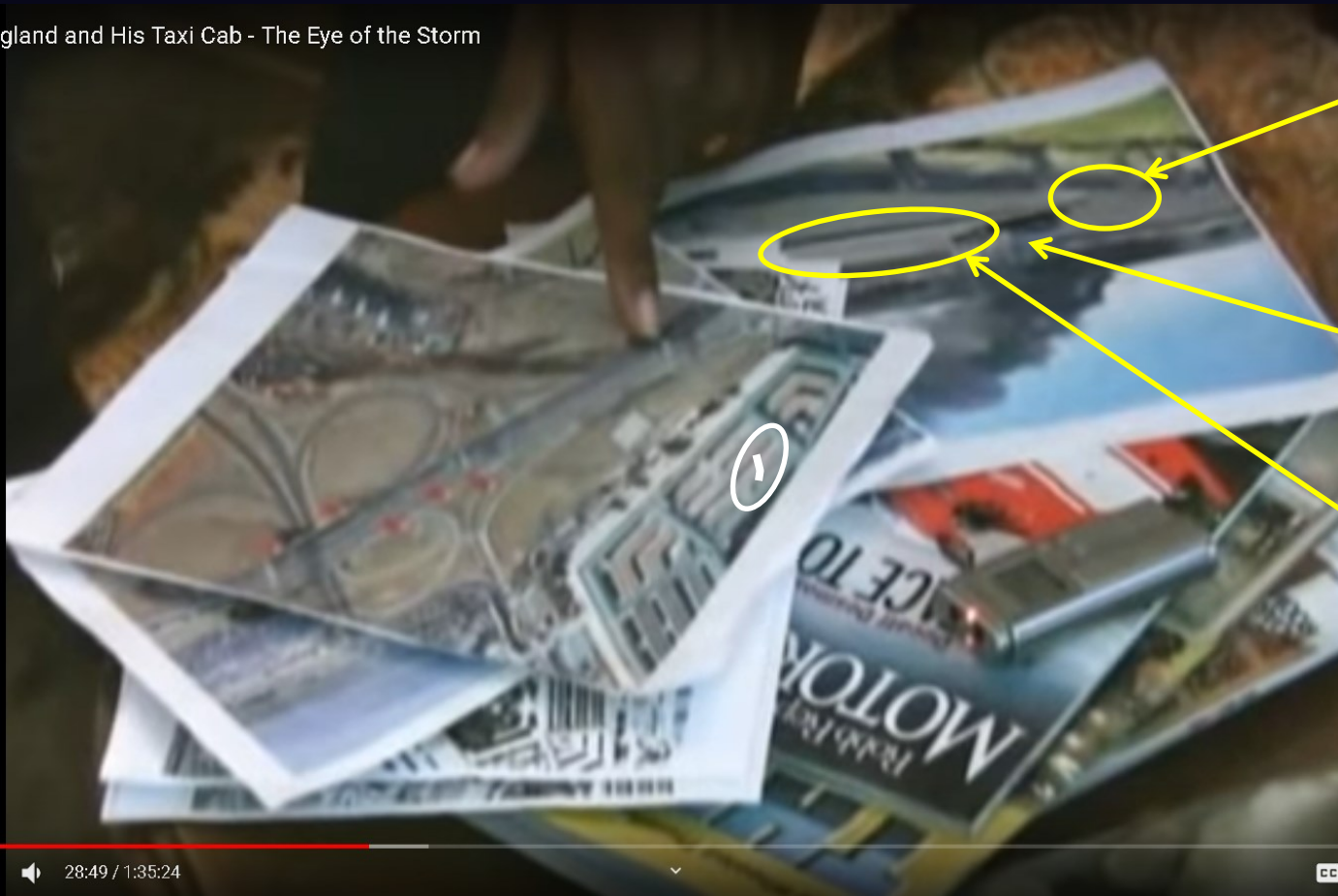
Lloyde England's Taxicab on 9/11;
Resolving the Long Running Controversy

C.I.T.'s Resulting Videos

- During on-camera interview sessions they discussed printed images
 - Pointed to various features
 - Did not discuss photo of “long pole” on-camera
- Left the most important issue out of the video interview
 - Preferred innuendo
 - Used misleading images in audio-only segment

C.I.T. Excluded Lloydde Pointing to the “Long Pole” in Any Photo

Lloydde England and His Taxi Cab - The Eye of the Storm



11 1/2 foot
“Long Pole”

Taxi

~25 foot Mast

28:49 / 1:35:24

Member, ScientistsFor911Truth.org

Lloydde England's Taxicab on 9/11;
Resolving the Long Running Controversy

40

C.I.T.'s Resulting Videos

- Omitted key questions and answers
- Substituted innuendo and accusations to create a “fantastical” story
 - Inserted images with inaccurate annotations during audio interviews to create their *story*

This Photo was C.I.T.'s Visual During an Audio-Only Interview



Member, ScientistsFor911Truth.org

Lloyde England's Taxicab on 9/11;
Resolving the Long Running Controversy

This Annotation Would Have Been Appropriate



Member, ScientistsFor911Truth.org

Lloyde England's Taxicab on 9/11;
Resolving the Long Running Controversy

When Lloydde Was Told by C.I.T. the 25 foot Mast Speared his Taxi

- C.I.T. asserted, “It couldn't be any other pole. The lamp is down next to it.”
 - Lloydde’s response was: **silence**

“It couldn't be any other pole.
The lamp is down next to it”



Member, ScientistsFor911Truth.org

Lloyde England's Taxicab on 9/11;
Resolving the Long Running Controversy

**“It couldn't be any other pole.
The lamp is down next to it”**

C.I.T.: These pictures are taken right after each other - at the same time. It shows the pole. The most important point is that – here is your cab – right?

Lloyde: That's not, That's not

C.I.T.: See your cab? See the grill? See you right here, you're wearing the cap.

Lloyde: Yeah, I see it, I see it.

C.I.T.: Now here is the pole. That's your pole – see the bend?

Lloyde: Yeah.

C.I.T.: That's the pole you pulled out – Right

Lloyde: [SILENCE]

C.I.T.: There's your cab. It couldn't be any other pole. The lamp is down next to it.

C.I.T. Left One Segment Where Lloyd Shows the Pole Location

- When visiting the damaged Taxi:
 - Lloyd gestures where the pole ended
 - Saying, “The pole went through – it went through – over here – straight back”
- Nowhere, during the visit to the damaged taxi, does Lloyd indicate the presence of a 25-30 foot pole on, or in, the vehicle

Lloyde Shows Where the Pole Was

Lloyde England and His Taxi Cab - The Eye of the Storm



Member, ScientistsFor911Truth.org

Lloyde England's Taxicab on 9/11;
Resolving the Long Running Controversy

Lloyde Shows Where the Pole Was

Lloyde England and His Taxi Cab - The Eye of the Storm

“The pole went through,
it went through –
**over here –
straight back”**

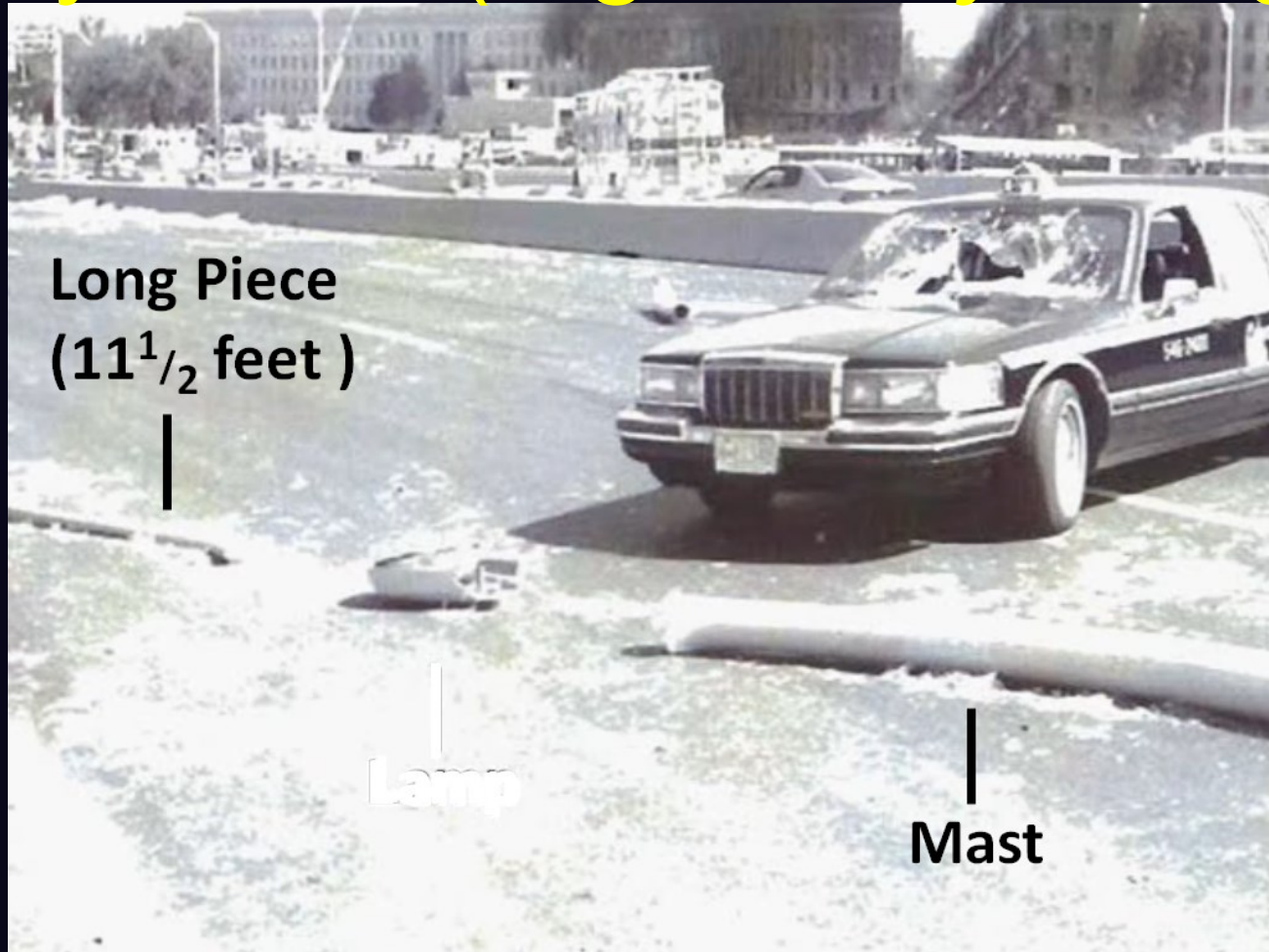


Note: Pole extended back to approximately where the rear seat would be and forward to the location above the hood shown earlier.

Member, ScientistsFor911Truth.org

Lloyde England's Taxicab on 9/11;
Resolving the Long Running Controversy

The “Long Piece” Was Mislabeled By C.I.T. (e.g., *Storytelling*)



Member, ScientistsFor911Truth.org

Lloyd England's Taxicab on 9/11;
Resolving the Long Running Controversy

Jeff Hill Interview

- A later interview omitted descriptive questions, such as:
 - How thick was the pole
 - Thick as a man's arm?
 - Big around as a man's head
 - How heavy was the pole
 - About 25 pounds?
 - Heavy as a 12 foot long 2" x 6" piece of lumber?
 - 200 pounds?

Jeff Hill Interview

- Lloyde described the pole coming in like a Javelin
 - Javelins are not “telephone pole” sized
 - Javelin’s are long and narrow
 - Diameter: 1.181 inches
 - Length: 8 feet 10 1/4 inches
- Lower lamp support arm
 - Diameter: tapered from about 2” to about 5”
 - Length: 11 1/2 feet

Lloyde England's Taxicab on 9/11; Resolving the Long Running Controversy

CONCLUSION

Member, ScientistsFor911Truth.org

Lloyde England's Taxicab on 9/11;
Resolving the Long Running Controversy

Many People Confused by the C.I.T.'s 25 Foot “Long Pole” Story

Example drawing by people confused by C.I.T.'s false information

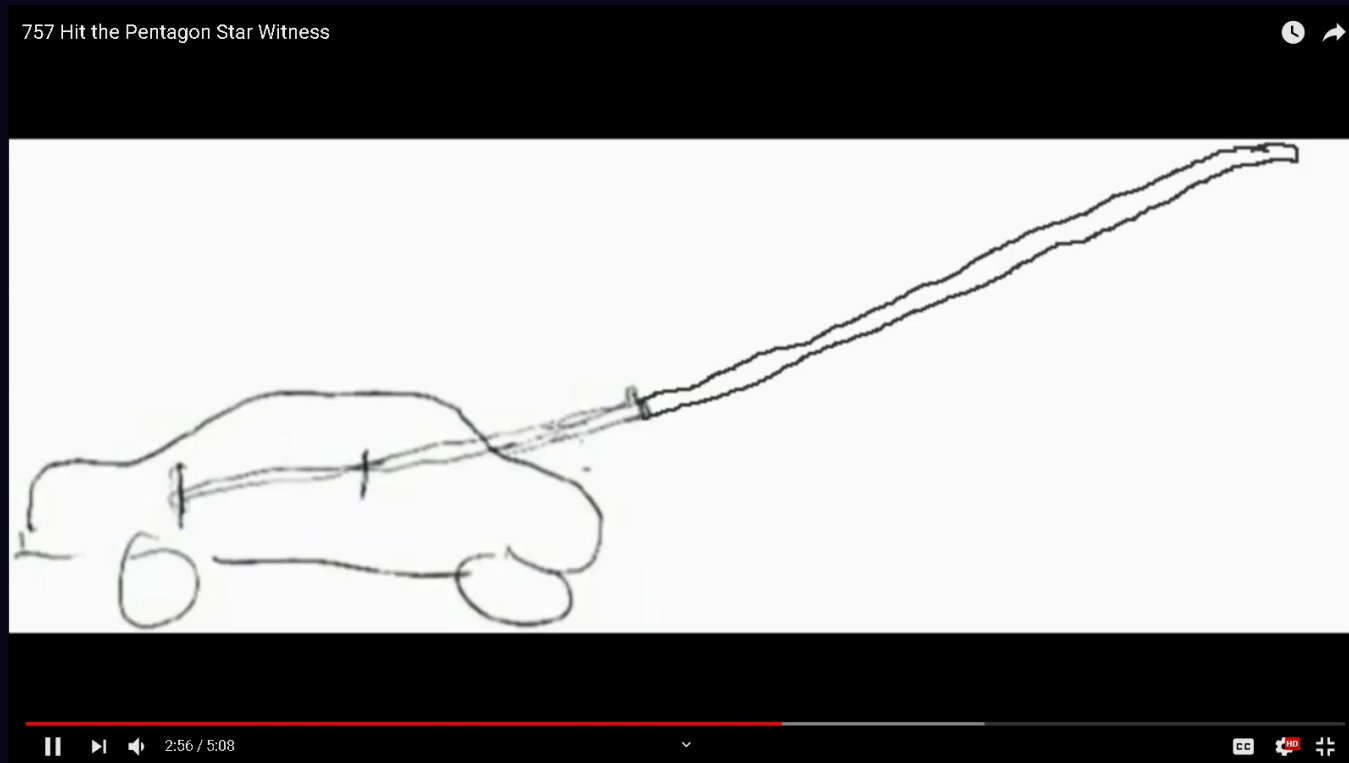


Member, ScientistsFor911Truth.org

Lloyde England's Taxicab on 9/11;
Resolving the Long Running Controversy

Many People Confused by the C.I.T.'s 25 Foot “Long Pole” Story

Example drawing by people confused by C.I.T.'s false information



Member, ScientistsFor911Truth.org

Lloyde England's Taxicab on 9/11;
Resolving the Long Running Controversy

Conclusion Regarding “Long” Pole

- The thin lower lamp support arm is about 11.5 feet long
 - Nearly twice as “long” as Lloydde is tall
 - Fits the meaning of “long”
- Lloydde shows, with his hand gesture, where the pole was located relative to the hood
 - Began near the front of his car’s hood and went straight back
 - Lloydde is clear and unambiguous in video clip

Member, ScientistsFor911Truth.org