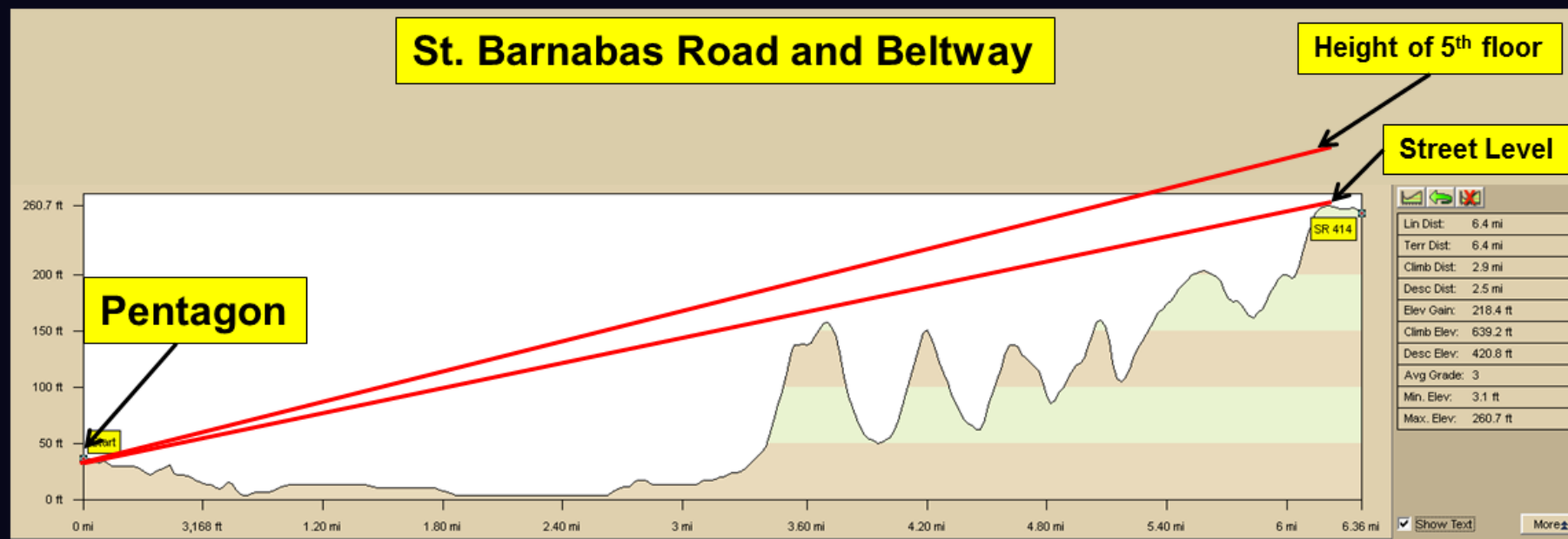


Line-of-Sight View of Pentagon Don Chauncey Perspective

Probable location, Constellation Centre, 6009 Oxon Hill Road, Oxon Hill, MD 20745



The key point from the Don Chauncey witness testimony is that he observed it from a distance. He saw the plane and did not report a “flyover.” A flyover would have been obvious to have see from his vantage point. The fireball would have been a significant part of his view – but the flyover would have been very obvious. Here is what he said:

At 36:00 – 38:00 from <https://archive.org/details/cbs200109110912-0954>

CBS: __ and Andrea

Announcer: Joining us by phone is Don Chauncey. Don, are you there?

Don: Yes I am.

Announcer: You witnessed what happened at the Pentagon — What did you see?

Don Chauncey: From my offices I was able to see a white jet — Gulfstream type commuter jet — I guess. It came at a high rate of speed. I could see National Airport’s tower from our offices. And it just increased its speed as it got closer to the Pentagon. Then I saw the big yellow ball of fire.

Announcer: And just exactly is your office — from where are you watching this?

Don: We — our offices are right off of St Bartamas Road and the Beltway. So I overlook the beltway from my office.

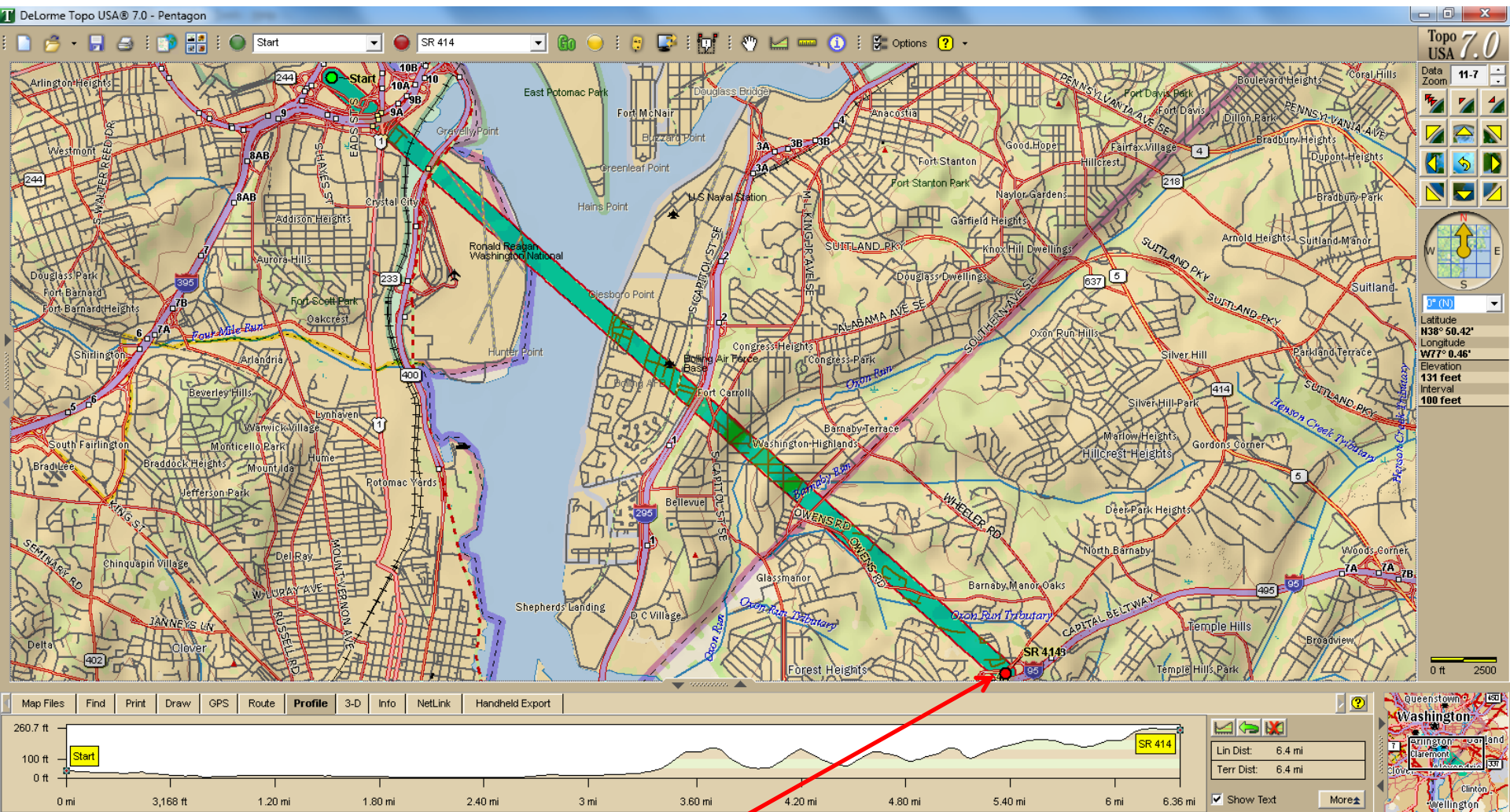
Announcer: Could you tell, Don, did the plane come out of National?

Don: No absolutely not. It appeared to be a US Air commuter jet that Went over the top of our building which is the normal flight pattern — I guess — for commuters. And this looked like it was coming — I guess down Columbia Pike from Arlington — from down that way. And then picked up a high rate of speed. From my desk right now I can see the Pentagon — basically where the metro station is and the buses — I can see that – and to the right — but I can’t see the , I guess, the south parking area.

Announcer: Don, what is the reaction of others in your office— I mean, watching the World Trade Center and then this, right in literally, your back yard.

Don: Well, myself and another coworker that sits besides -- both of us were actually on the phone looking out the window when it happened - and both of us dropped the phone and picked it up. We have to go. It looks like somebody a plane crash at the airport or the Pentagon ...

There was no report of a flyover from someone who should have been able to see it.



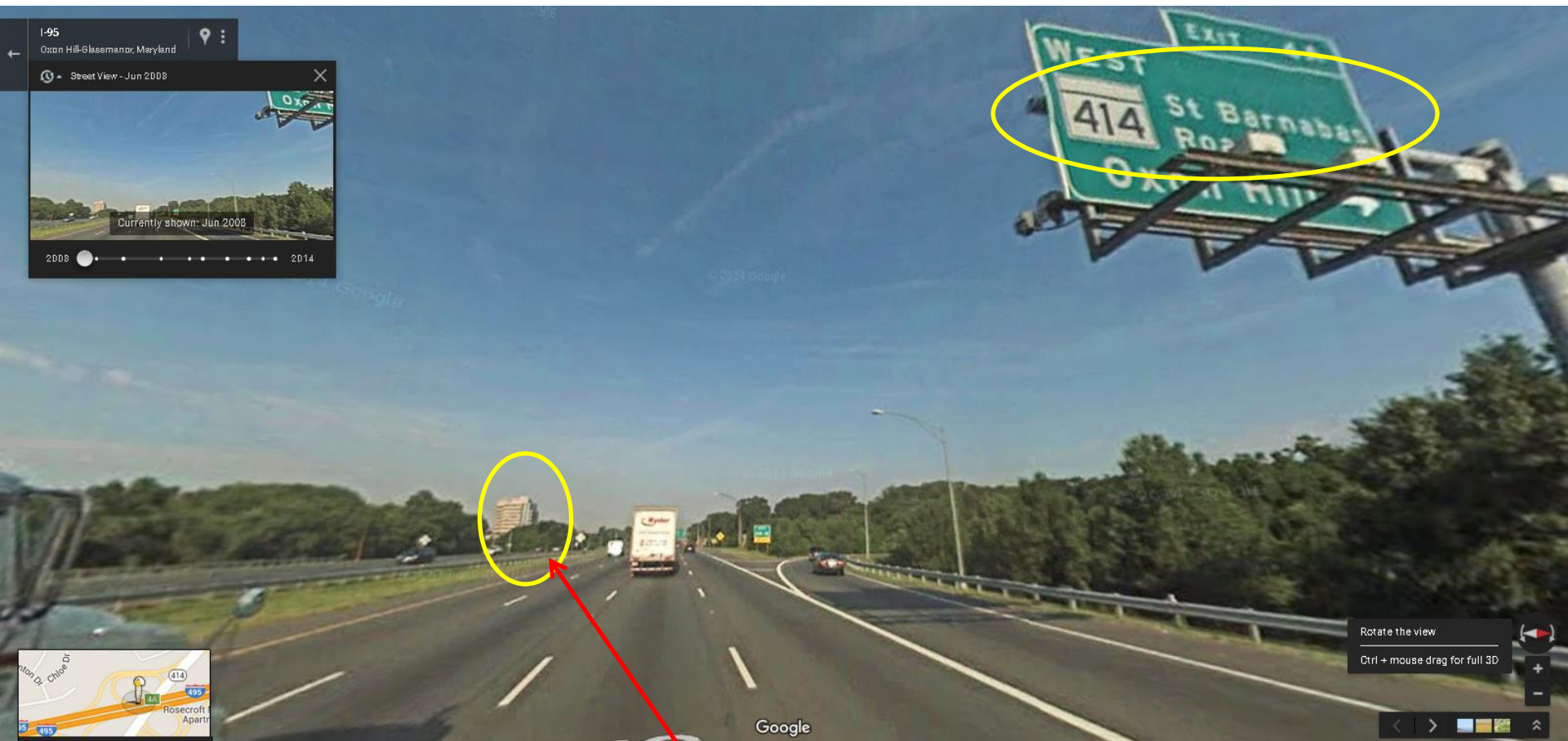
Constellation Centre, 6009 Oxon Hill Road, Oxon Hill, MD 20745
10 story office building built in 1989

Constellation Centre, 6009 Oxon Hill Road, Oxon Hill, MD 20745





**Constellation Centre, 6009 Oxon Hill Road, Oxon Hill, MD 20745
10 story office building built in 1989**



**Constellation Centre, 6009 Oxon Hill Road, Oxon Hill, MD 20745
10 story office building built in 1989**

Constellation Centre

6009 Oxon Hill Road, Oxon Hill, MD 20745

Property Type	Office	Tenancy	Multiple
Property Sub-type	Office Building	Year Built	1989
Property Use Type	Investment	Lot Size	7 AC
Listing ID: 118354		Date Created: 09/20/2000 Last Updated: 08/23/2001	

Description

One Constellation Centre is a Class "A," 10-story, 178,198 sq. ft.

office building located in Oxon Hill, Southern Prince George's County, Maryland. The Building includes a total of 413 structured parking spaces and 225 surface spaces. Also included is a development site that allows for a second office building of similar size.

One Constellation Centre is located in Oxon Hill, Maryland, one of the most promising sub-markets in Southern Prince George's County. Although small - Oxon Hill consists of 19 office buildings totaling 686,000 square feet of space - the sub-market and surrounding area is home to many large and growing federal government agencies and contractors such as the IRS.

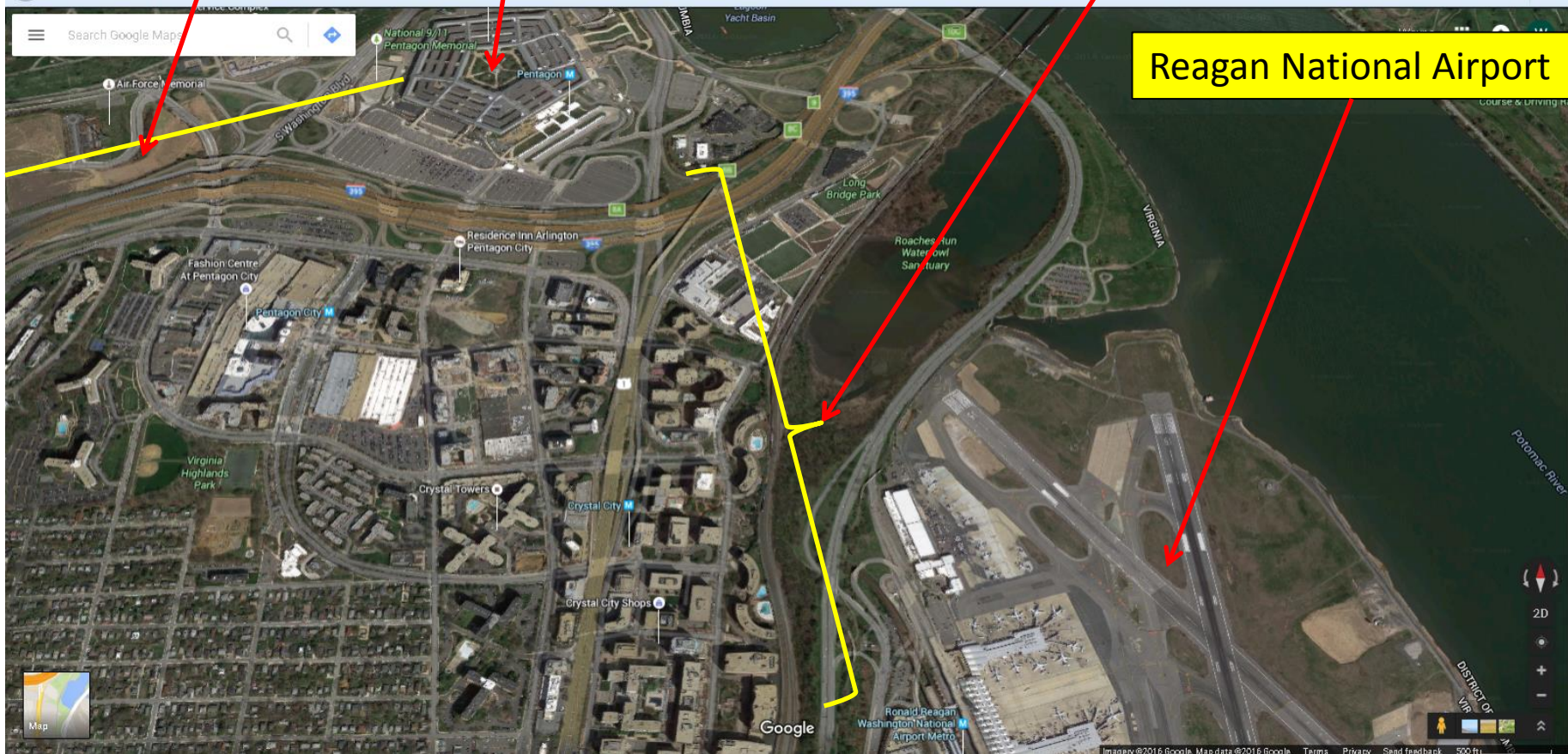
Highlights

- Highest quality office building in Prince George's County
- Triple "A" credit with 69% Federal Government (IRS) Tenancy
- Purchase price significantly below replacement cost
- Captive market for tenants requiring quality space at a discount to Montgomery and Northern Virginia marketplace
- Close proximity to current and proposed retail amenities including the new Southeast, D.C. waterfront development, Grand Old Opry Hotel
- Superior access to extensive highway system including I-495, I-95 ...

Columbia Pike

Pentagon

Crystal City High Rises



Reagan National Airport

